

The image features a deep red, textured background. A large, stylized white feather graphic is positioned diagonally across the upper half. Overlaid on the feather is the year '1965' in a large, white, gothic-style font. The feather's barbs are detailed with fine lines, and the overall composition is dynamic and artistic.

1965

PANORAMA

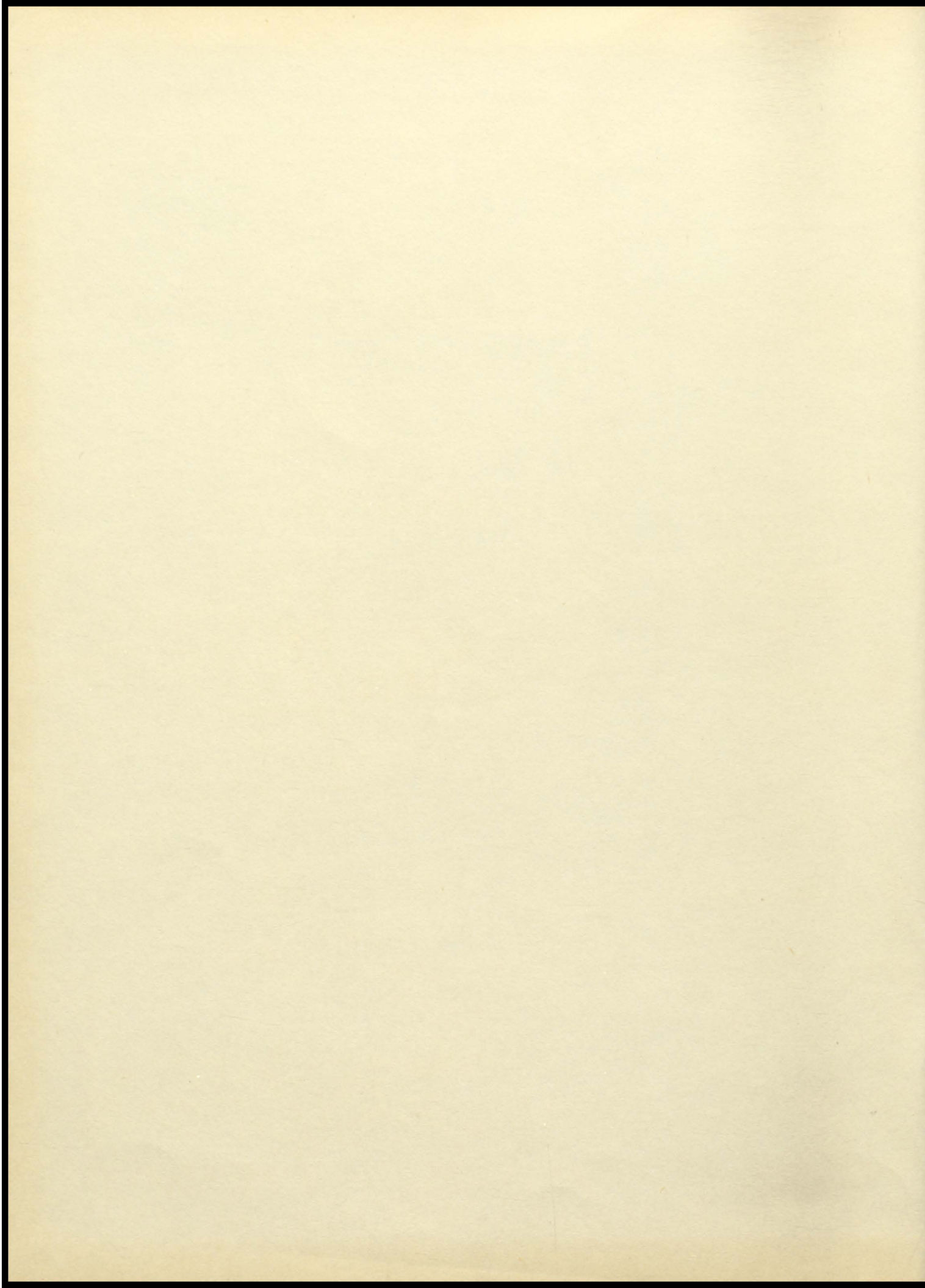














*The*  
*1965*  
*Panorama*  
*Staff*

Mrs. Susie B. Petrey  
Miss Rachel Lightfoot  
Martha McDougald  
Pat Walker

Sponsor  
Sponsor  
Editor  
Editor

*Presents . . .*




*“Spirit Free And  
Pride In Life”*

*May this 1965*

*Panorama*

*serve as a permanent  
record of the Memories  
of your days at  
Luverne High*



A black and white portrait of an elderly woman with short, wavy white hair. She is wearing dark-rimmed glasses and large, round, multi-strand pearl earrings. She is dressed in a dark, patterned top with a large white carnation corsage pinned to the left side of her chest. The background is a plain, light-colored studio backdrop.

*Dedication*  
*Miss Ollie Mae Walker*  
*Because of her kindness, understanding,*  
*and faithfulness through the years*



*Principal*



*C.W. Claybrook*





## *Assistant Principal*

MR. SAMUEL M. CARR

## *School Secretary*

MRS. LENA MAE CARTER





# *The Faculty*



*Our Inspiration*

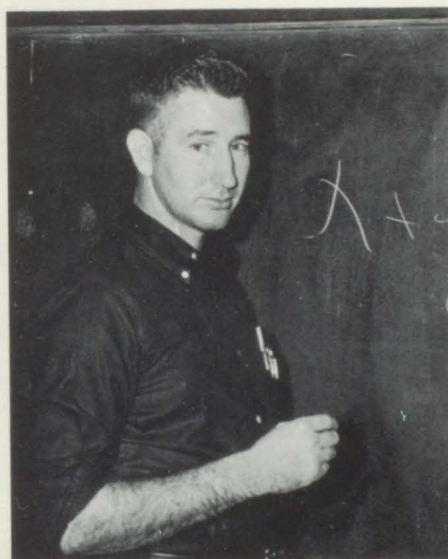


# Faculty



MRS. LINDA BLAND  
Home Economics  
B.S., Alabama College

MRS. SARA CAPPS  
Junior High School  
B.S., Troy State College



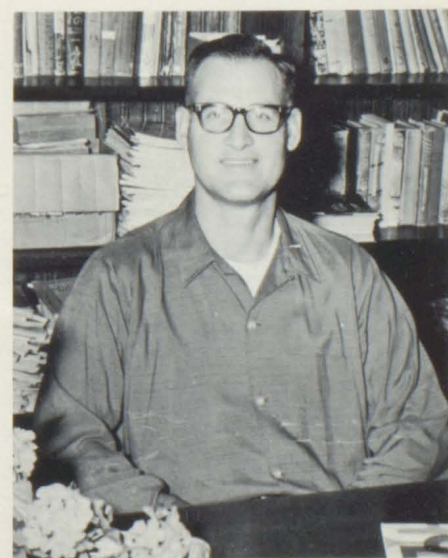
MR. SAMUEL CARR  
Math  
B.S., Troy State College

MR. LOWELL CARTER  
Vocational Agriculture  
B.S., Auburn University



COACH BILLY CREWS  
Physical Education  
B.S., University of Alabama

COACH GLENN DANIEL  
History and P.E.  
B.S., Livingston S.T.C.  
M.A., University of Alabama





# Faculty



MRS. SARA FOLMAR  
Senior Science  
B.S., University of Alabama

MRS. MAGGIE JEFFCOAT  
Junior High Math  
B.S., Troy State College



MISS RACHEL LIGHTFOOT  
Librarian  
A.B., Huntingdon College  
M.A., University of Alabama

MRS. ANNE MITCHELL  
Junior High Social Studies  
B.S., Troy State College



MRS. CATHERINE NORMAN  
Physical Education  
B.S., Troy State College

MRS. JEAN PETREY  
Senior English  
B.S., M.S., Troy State College





# Faculty



MRS. SUSIE PETREY  
Junior High English  
B.S., Troy State College

MISS RUTH SADLER  
Commercial Subjects  
B.S., Auburn University



MRS. BETTY SPEED  
Junior English and Science  
B.S., M.A., Troy State College

MR. CHARLES SPORT  
History  
B.S., M.S., Troy State College



MRS. TRUBIE STRICKLAND  
Algebra and Science  
B.S., Troy State College

MRS. DEE TURNER  
French  
A.B., Doane College  
M.A., Columbia University



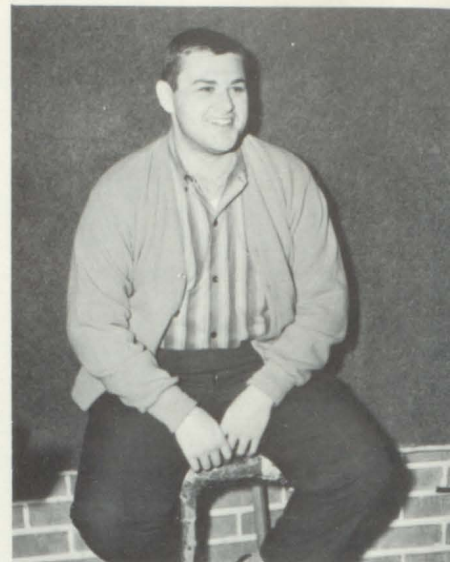


# Faculty



MISS OLLIE MAE WALKER  
Junior High Subjects  
B.S., Troy State College

MR. BILL WHEELER  
Band  
Troy State College



## Music

MRS. ROBERTA LITTLE



MRS. BOBBIE JACKSON



MRS. LILA FOSTER



## Cafeteria Staff



## Custodian







*Spirit In Our School*



# *Panorama Staff*



*Sponsor*

Mrs. Susie Petrey



*Sponsor*

Miss Rachel Lightfoot





### *Editors*

Martha McDougald and Pat Walker



### *Feature Editors*

Mary Ann Helms and Kathryn Campbell



### *Business Managers*

Edward Sanders, Stephen Coleman and Jerry Turner



### *Sports Editors*

Johnny Nichols, Ben Williams, Drew Elliott, and Lewis Jones.



### *Class Editors*

Mason, Killough, Perdue, Moses, Rushing, Hinson, Richburg, and Mills.



### *Band Editors*

Patricia Alford, Bob Ausbon, and Annette Mitchell.



# National Honor Society



*President*



Pat Walker

*Vice - President*



Johnny Nichols

*Secretary*



Mary Ann Helms



*Treasurer*



Stephen Coleman

Emphasizing and encouraging citizenship, leadership, service, and character, the National Honor Society selects its members on the basis of how well these four cardinal principles apply to them. Constantly impressing upon the minds of students the importance of these virtues is the aim of both sponsors and members.



# Tiger Rag Staff



*Editor*



Martha McDougald

*Co - Editor*



Sue McDougald

## *Staff*

FIRST ROW: Sally Curtis, Sammy Curtis, Martha McDougald, Stephen Coleman, Brenda Killough, Bob Ausbon, Carolyn King, Edward Sanders, Kay Granger, Go-Go Watson, Clarice Curtis. SECOND ROW: Charlotte Hudgens, LaRue Carr, Charlotte Hinson, Mary Ann Helms, Suzette Mason, Pat Perdue, Sue McDougals, Joanne Mills, Patricia Alford, Cathy Summerlin, Kathryn Campbell, Jane Jones, Janice Little. THIRD ROW: Mary Morgan, Jean Berger, Johnny Nichols, Wayne Sanders, Pat Walker, Glenn Daniel, William Sikes, Pat Williamson, Mike Summerlin, Marsha Martin, Barbara King, Joy Turner, Charlotte Bell, Foye Rushing, and Miss Sadler.



# *Future Homemakers of America*



*President*



Kathryn Campbell

*Vice - President*



Olivia Mills

*Secretary*



Dianne Long

*Treasurer*



Jane Jones

*Historian*



June Hughes

*Parliamentarian*



Glenda Sanders







*FFA*  
*Sweetheart*  
*Miss Vera Wilson*



*FHA*  
*Beau*  
*Luther Mills*



# *Future Farmers of America*



*Vice - President*



Johnny Nichols

*President*

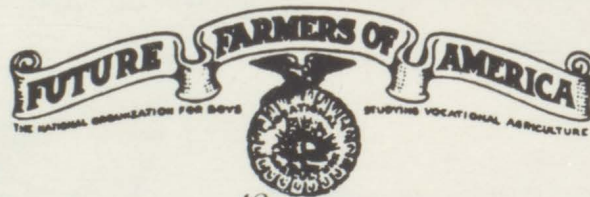


Richard Swanner

*Secretary*



Jerry Turner



*Treasurer*



Donald Hilburn

*Reporter*



Billy Davis

*Sentinel*



Bobby Wallace



# Future Teachers of America



*President*



Martha McDougald



*Vice - President*



Sue McDougald

Aspiring teachers from the 9th-12th grades make up the membership of the Beta Mu Future Teachers of America at LHS. As one of the most active organizations on campus, FTA has promoted American Education Week, honored retired teachers, presented assembly and PTA programs, and sponsored student participation in classroom teaching. The entire chapter attended the district convention and sponsored candidates for Mr. and Miss District FTA, and ten delegates attended the State convention, where the chapter sponsored candidates for State Vice President and Miss State FTA. Advisors are Mrs. Betty Speed, Mrs. Jean Petrey, and Mrs. Mary Elizabeth Davis.

*Secretary*



Mary Morgan

*Treasurer*



Cheryl Welch

*Historian*



Linda Talley

*Parliamentarian*



Pat Williamson



# Quill Craftsmen



*President*



Pat Walker

*Vice - President*



Jerry Turner



*Secretary*



Mary Morgan

*Treasurer*

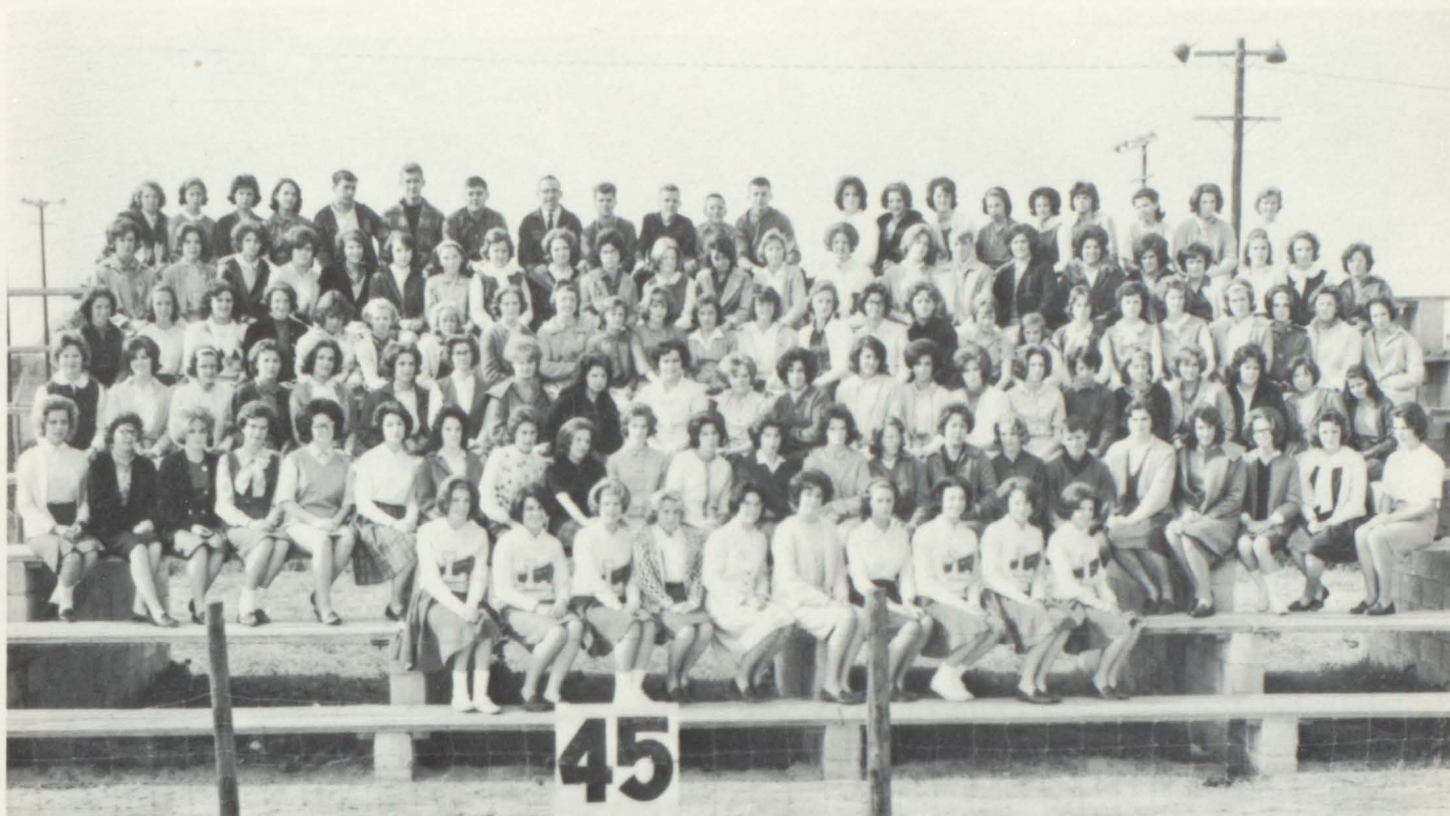


Brenda Killough

Any competent, ambitious writer is eligible for membership in the Quill Craftsmen. This club is an active organization which promotes interest in and the acquaintance with writings of creative caliber. At the end of each year, this club publishes a booklet of creative works composed of writings of the members and of other students', which qualify for publication, entitled the Quips and Quotes of the Quill Craftsmen.



# Pep Squad



*President*



Martha McDougald

*Vice - President*



Sue McDougald

At all of the LHS football and basketball games, the pep squad may be seen cheering the tiger team to victory. The pep squad performs annually at a football game and participate in the Homecoming parade. This active group does much to boost the spirit of our team and spectators alike.

*Sec. - Treasurer*



Janice Johnson



## *French Club*



## *Music Department*





# Office Workers

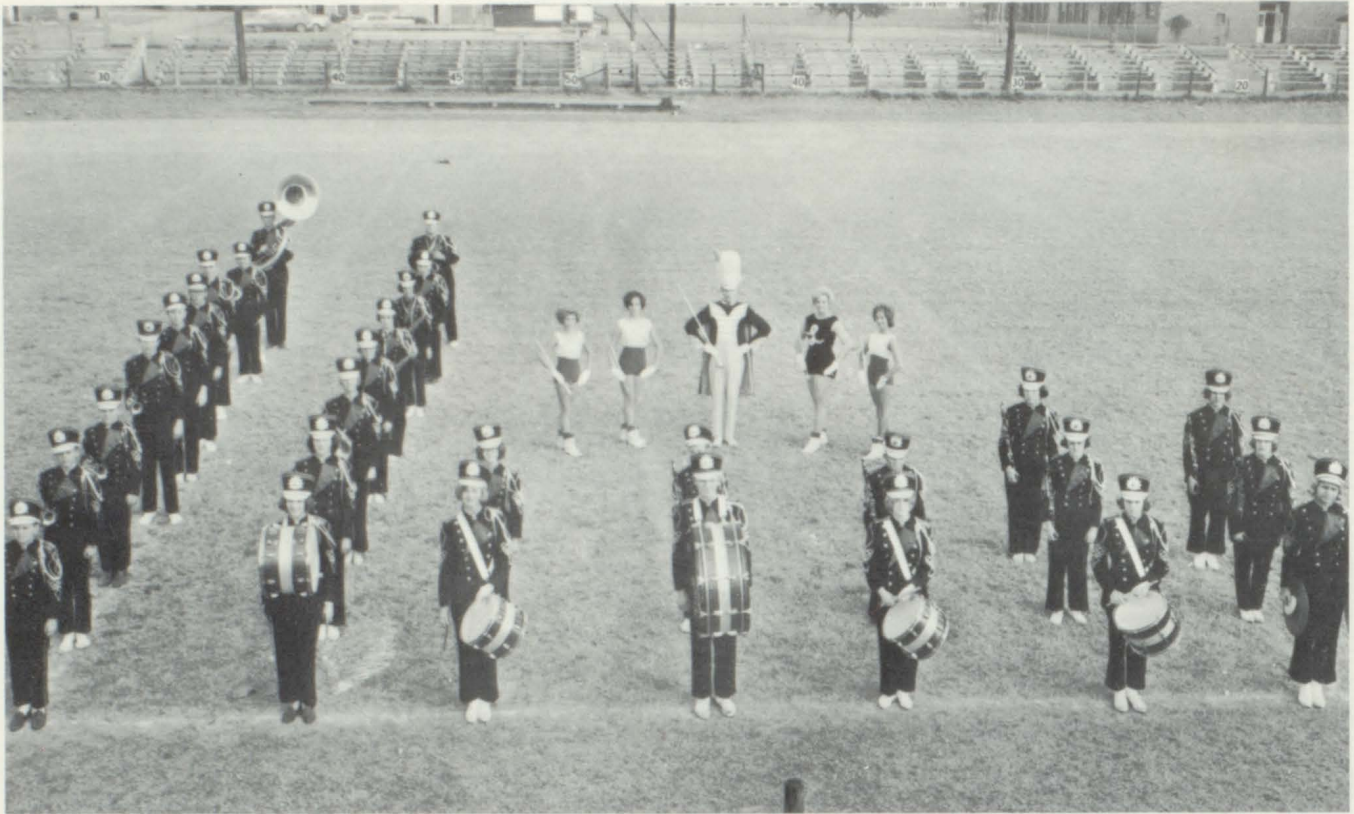


*Librarians*





# *L. H. S. Band*



Symbolizing the students' spirit and loyalty, the Luverne High School Marching Band can be seen performing in halftime shows during football season. Also presented by the band is a spring concert. Football pep rallies would seem incomplete without the sound of the band playing the "Fight Song."





## *Majorettes*



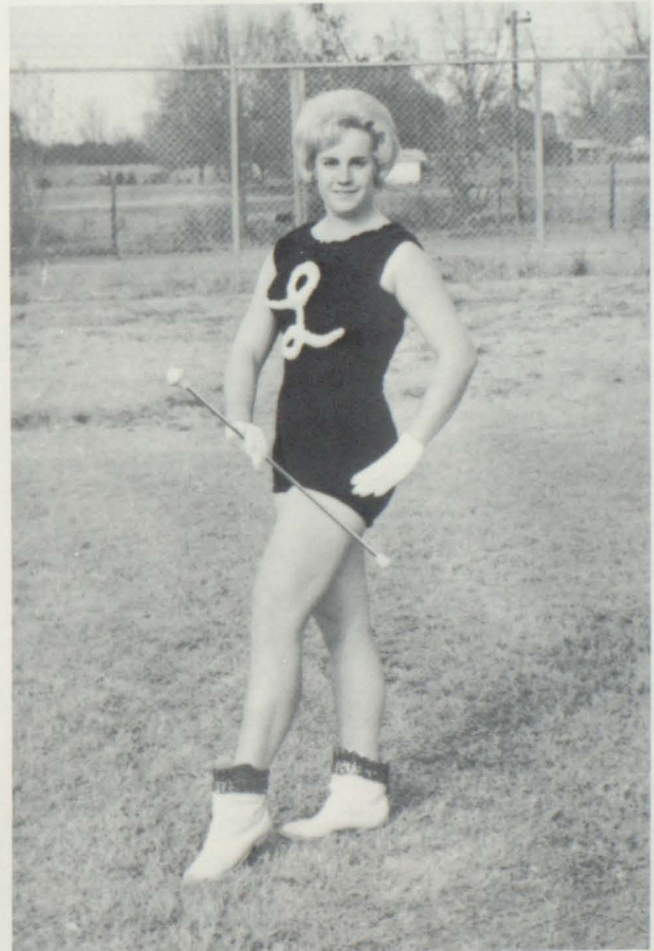
Linda McSwean, Dianne Qualls, and Carolyn King.

## *Drum Major*



Mike Summerlin

## *Head Majorette*



Annette Mitchell



# *"L" Club*



*President*



Stephen Coleman

*Vice - President*

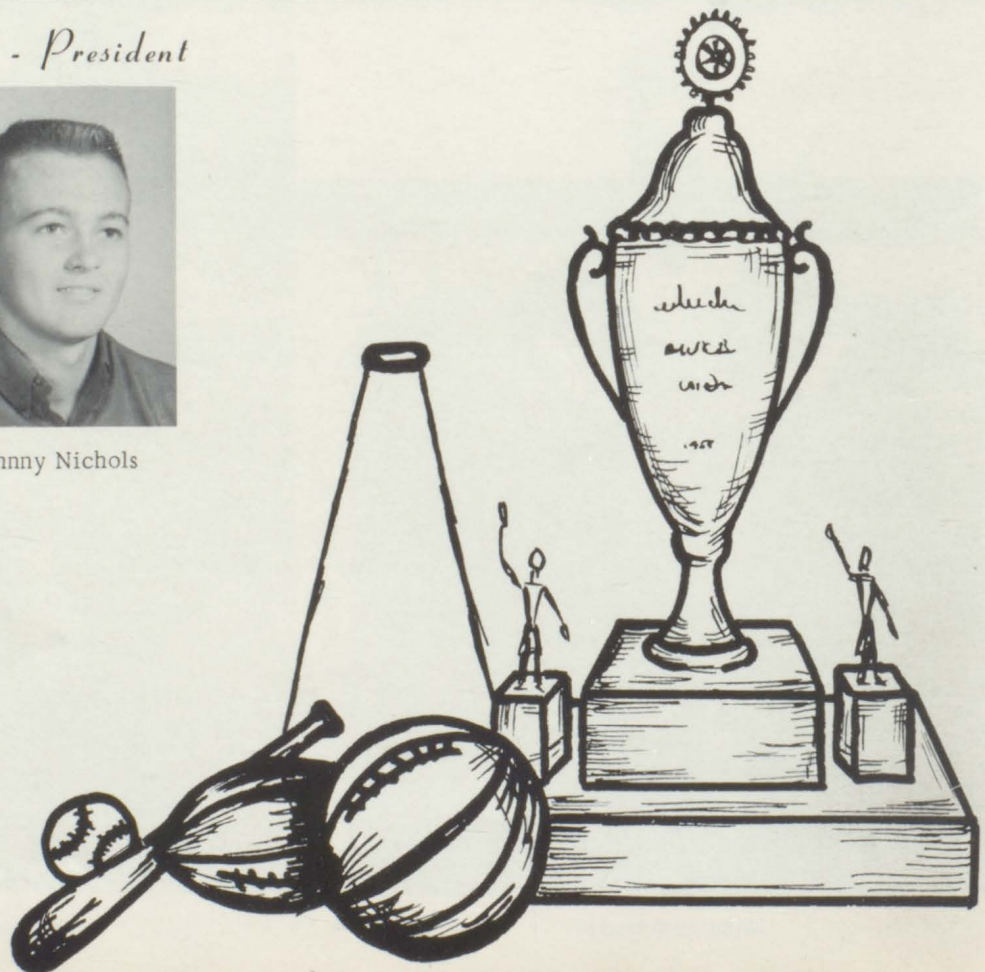


Johnny Nichols

*Secretary - Treasurer*



Cathy Summerlin







*"Pride In Our Features"*



*As We See Her*





*Top Beauty*



*Miss Cathy  
Summerlin  
Junior*



*Beauty*



*Miss Vera Wilson  
Senior*



*Beauty*



*Miss Jane Jones*  
*Sophomore*



# *Beauty*



*Miss Marilyn  
Strickland  
Sophomore*









*Janice McCartha*  
*Senior*



*Martha McDougald*  
*Senior*

*L H S Sweethearts*



*Foye Rushing*  
*Senior*



*Nancy Heltinger*  
*Junior*





*Olivia Mills*  
*Junior*



*Ann Sikes*  
*Junior*

*L H S Sweethearts*



*Judy Ray*  
*Sophomore*



*Elsie Stokes*  
*Sophomore*



# *Favorites*

## *Cheryl Welch*

A junior, Cheryl is secretary-treasurer of the junior class, a member of the National Honor Society, F.T.A., French Club, Quill Craftsman, Pep Squad, and many other organizations. She is a well-rounded person with many outstanding qualities.

## *Jerry Turner*

A senior, Jerry is president of the senior class, secretary of the F.F.A., vice-president of the Quill Craftsman, most popular in Who's Who, honor student, the F.F.A. Quartet, National Honor Society, Panorama Staff, and football team. He is also very active in church work and plans to be a Methodist minister.



## *Kathryn Campbell*

A senior, Kathryn is president of the F.H.A. and 4-H Club, cheerleader, best all around in Who's Who, Honor Student, feature editor of the Panorama, and a member of the National Honor Society, Tiger Rag Staff, Pep Squad, and "L" Club. She has a great personality and is a friend to all.

## *Ben Williams*

A senior, Ben is vice-president of the senior class, co-captain of the football team, Good Citizenship Boy, recipient of the Good Sportsmanship and Best Back Trophy, Honor Student, Class Historian, Graduation Speaker, Best School Spirit in Who's Who, and member of football, basketball, and baseball teams, "L" Club, National Honor Society, and Panorama Staff. He is a good student, as well as a great athlete and is well liked by everyone.





# *Favorites*

## *Carol Kendrick*

A sophomore, Carol is a cheerleader, member of the National Honor Society, "L" Club, French Club, Girl Scouts, and Best Personality in Who's Who. She is a wonderful person with a really marvelous personality.

## *Richard Swanner*

A junior, Richard is president of the junior class, president of the FFA, public speaker for 4-H and FFA, member of football team, "L" Club, FFA Quartet, and many other high school organizations. Richard is a very popular person and one who knows the true meaning of friendship.



## *Sue McDougald*

A junior, Sue is co-vice president of the junior class, vice-president of the F.T.A., vice-president of the Pep Squad, assistant editor of the Tiger Rag, member of the Quill Craftsmen, National Honor Society, and French Club. Sue is a kindhearted person filled with the qualities of leadership, scholarship, and character.

## *Charles West*

A senior, Charles is co-captain of the football team, member of the basketball and baseball teams, 4-H Club, FFA, "L" Club, Most Outstanding Senior, and the recipient of the Most Valuable Player Trophy for his outstanding year of football. He also took many state and conference football honors. A well-rounded person, Charles is outstanding in all fields but especially gifted in athletics.







*Homecoming Queen*  
*Miss Vera Wilson*





*Attendant*

*Miss Olivia Mills*



*Attendant*

*Miss Judy Ray*



*Miss Football*



*Miss Martha McDougald*





*Homecoming Court*



*Student*

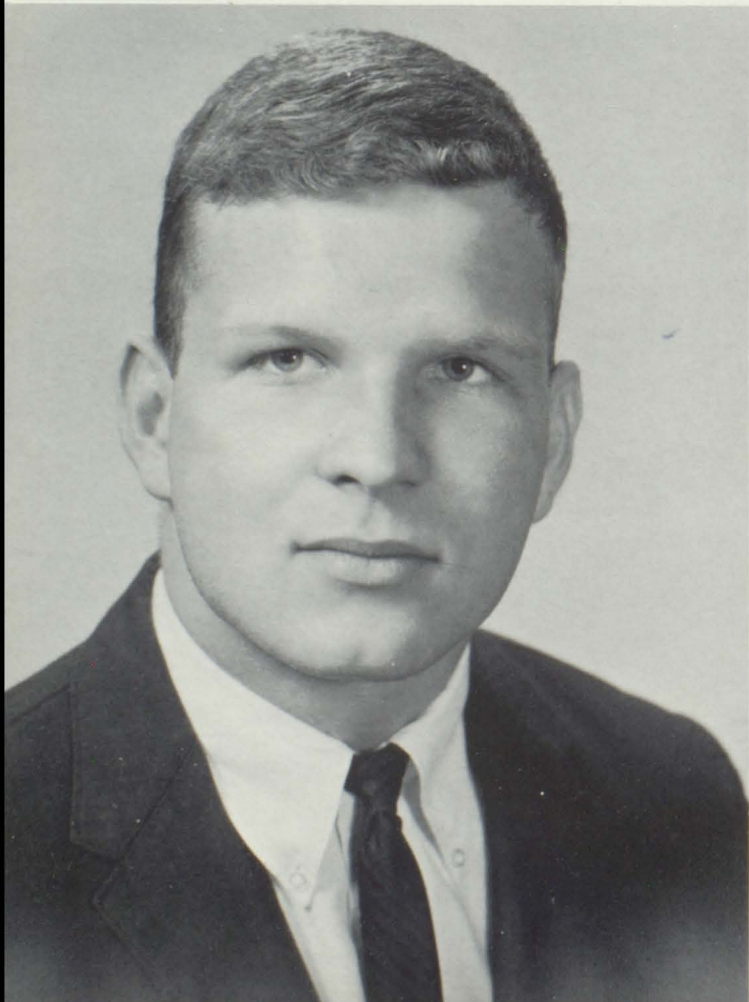
*Girls' State*

*Mary Ann Helms*



*Boys' State*

*Pat Walker*



*County Winner*

*Birmingham News Oratorical Contest*

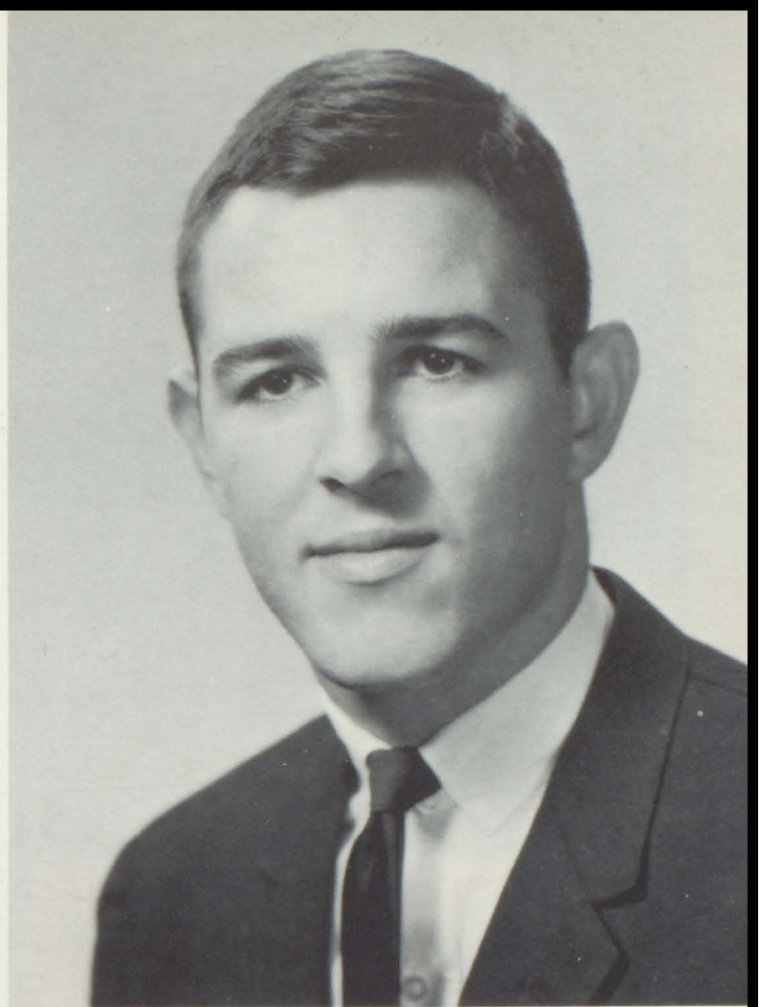
*Stephen Coleman*



# *Superlatives*

*Good Citizenship Boy*

*Ben Williams*



*Good Citizenship Girl*

*Rita Richburg*



*Journalism Scholarship*

*Northwestern University Summer Program*

*Mary B. Morgan*



# *Senior High*

## *Most Popular*

Judy Ray and Jerry Turner



## *Best Personality*

Carol Kendrick and Johnny Bagwell



## *Best All Around*

Kathryn Campbell and Johnny Nichols



# *Who's Who*

## *Most Courteous*

Jean Berger and Pat Williamson



## *Most Talented*

Mary Morgan and Pat Walker



## *Most Likely To Succeed*

Rita Richburg and Stephen Coleman





## *Typical Teenagers*

Elaine Raley and Teeny Russell

## *Cutest*

Foye Rushing and Drew Elliott



## *Best School Spirit*

Mary Ann Helms and Ben Williams



## *Friendliest*

Jane Jones and Chippy Sipper



## *Most Studious*

LaJuan Sipper and Bobby Wallace



## *Most Athletic*

Judy Hybart and Charles West





# *Junior High*

## *Most Popular*

Hope Mills and Butch Norman

## *Best All Around*

Sandra Harbin and Joe Petrey



## *Best Personality*

Christie Jackson and Bruce Long



# Who's Who

## *Cutest*

Rebecca Whitman and Fred Jeffcoat



## *Most Courteous*

Doris Pouncey and Steve Miller



## *Friendliest*

Walter Folmar and Nancy Rhodes



# *Most Outstanding Seniors of 1965*



Stephen Coleman



Kathryn Campbell



Mary Ann Helms



Martha McDougald



Charles West



Ben Williams

*As Voted by the Senior Class*





*Spirit In Our Sports*



# *Luverne Tigers of 1965*



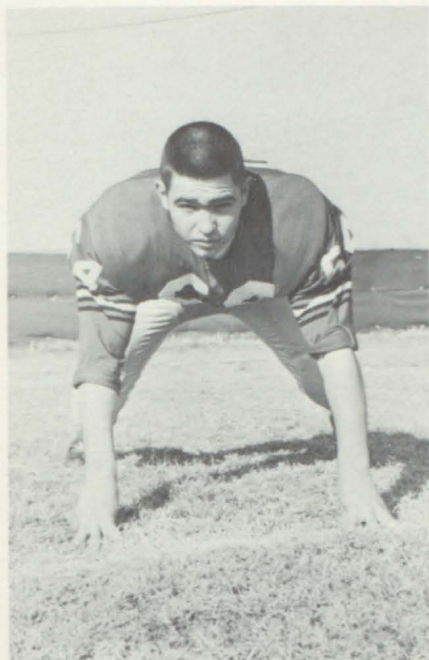
FRONT ROW: Perdue, Bagwell, Dickerson, Russell, Hall, Flynn, Turner, Owens, Watts, Campbell, Lowery, Pines, Rodgers, Wyrosdick. SECOND ROW: Jones, West, Brooke, Williams, Jones, Williams, Weaver, Nichols, Tomlin, Tate, Vaughn, Brooke, West. THIRD ROW: Coach Sport, Coach Crews, Coleman, Swanner, Daniel, Coggins, Elliott, Butler, Majors, Wyrosdick, Sikes, Finley, Davis, Holladay, Coach Carr, Coach Daniel.



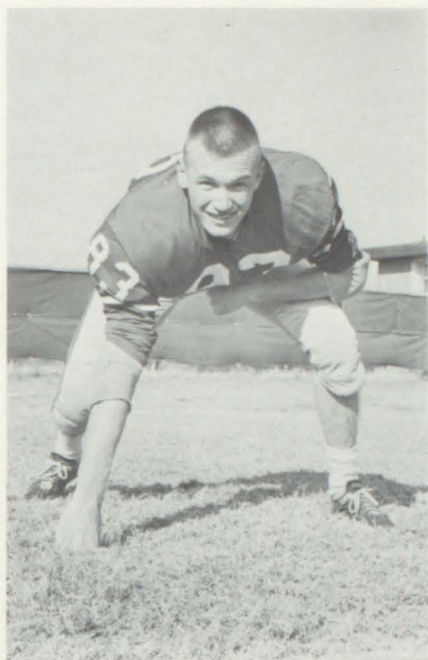
Head Coach Glenn Daniel

Co-captains Williams and West

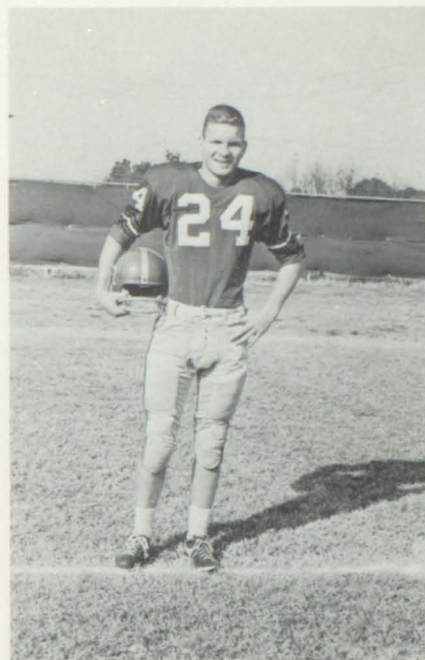




JOHNNY BAGWELL  
Senior End



JOHN ALLEN BUTLER  
Senior End



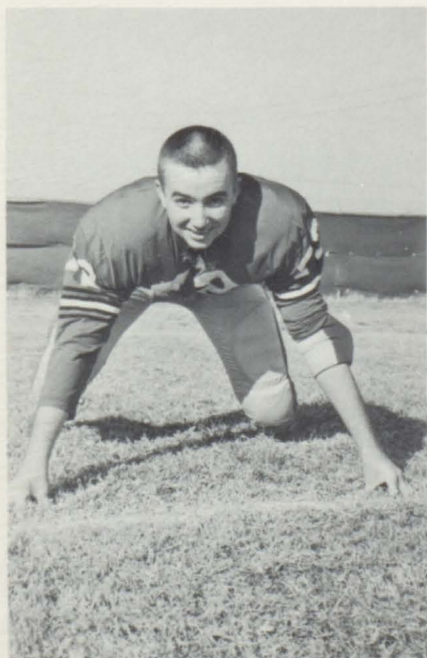
STEPHEN COLEMAN  
Senior Halfback

#### Luverne 25 - Georgiana 6

Luverne journeyed to Georgiana and won its first game of the season on a rain-soaked field as they downed a strong Panther eleven. Despite twenty-nine Georgiana passes the Tiger defense held them to only six points. Playing outstandingly in their capacity were Charles West, Johnny Bagwell, Jerry Turner, and Randy Watts.

#### Luverne 14 - Elba 0

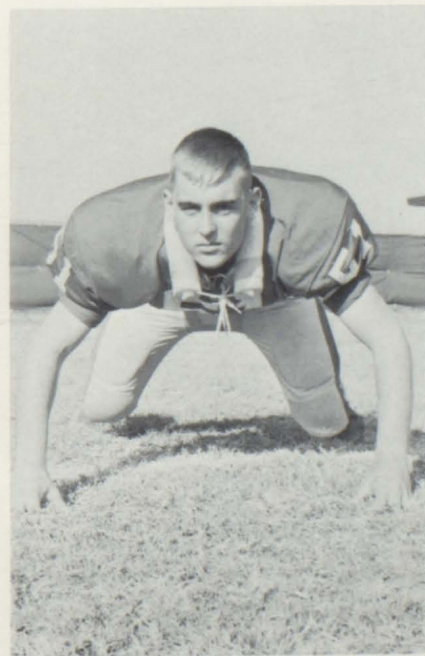
After a slow start Luverne came back strongly in the second half to beat a fired-up Elba team. John Allen Butler, alert Tiger end, received the Lineman of the Week Award as he recovered a Luverne fumble in the end zone for a touchdown.



BILLY DAVIS  
Senior Tackle

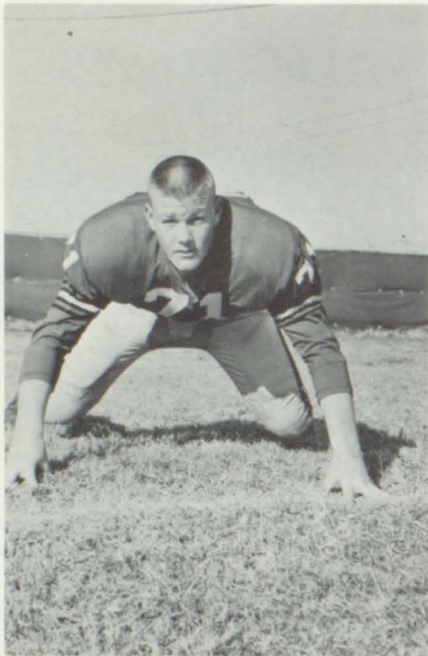


PAUL DICKERSON  
Senior Fullback



DREW ELLIOTT  
Senior Tackle

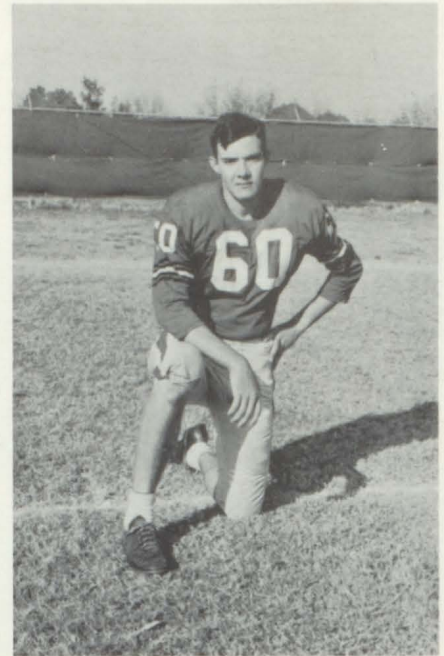




JERRY HOLLADAY  
Senior Tackle



LEWIS JONES  
Senior Guard



REX MAJORS  
Senior Guard

#### Luverne 12 - Andalusia 13

Luverne suffered its first set back of the season as they played host to a strong Bulldog team. However, the Tiger never gave up until the final whistle when a Luverne desperation pass was intercepted deep in Bulldog territory. Playing well in the face of defeat were Morris Tate and Mike Jones.

#### Luverne 27 - Brantley 20

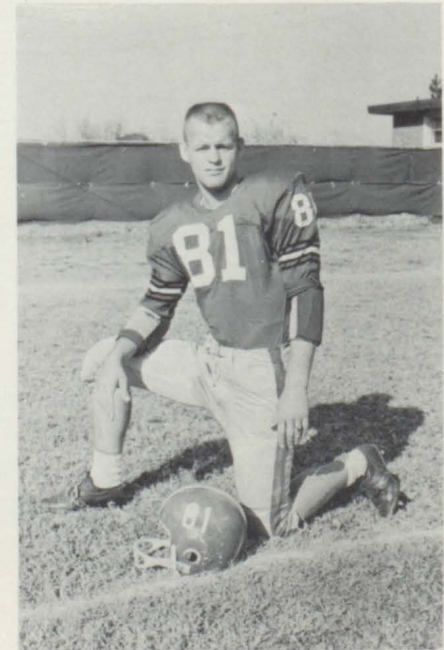
Luverne took their third game of the season as they traveled to Brantley and downed the arch-rival Bulldogs. The Tiger offense rolled almost at will, but was hindered greatly by freak plays. Johnny Nichols, Louis Jones, and Jerry Holladay did an outstanding job in the offensive line.



JOHNNY NICHOLS  
Senior Center



MORRIS TATE  
Senior Tackle

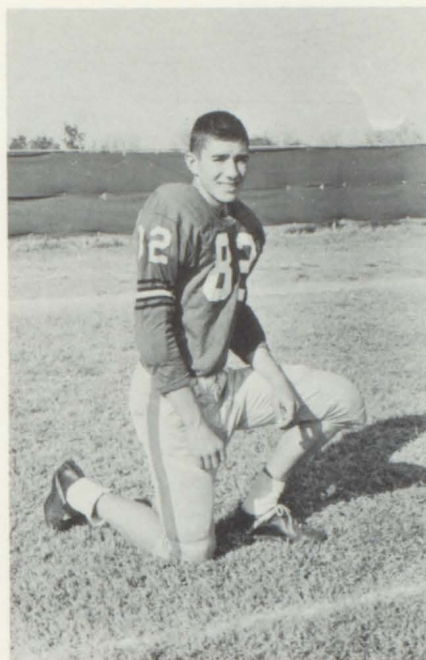


ROBERT TOMLIN  
Senior End





JERRY TURNER  
Senior Halfback



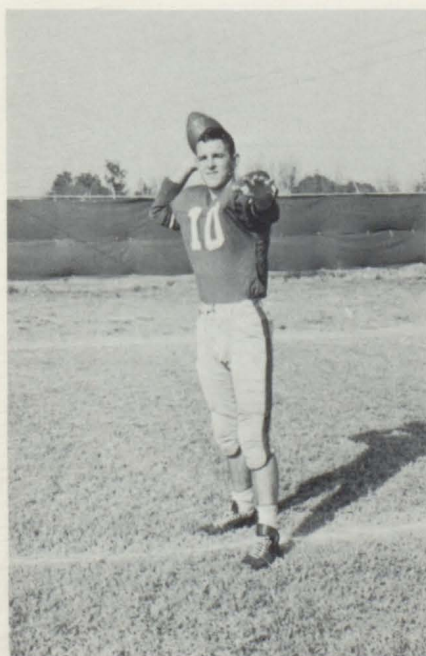
MIKE WEAVER  
Senior Guard



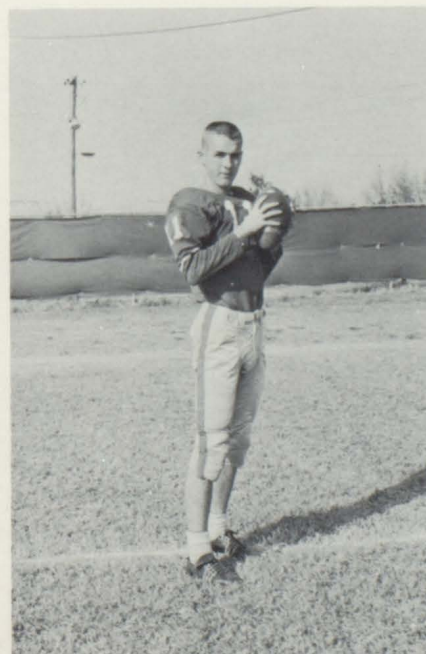
CHARLES WEST  
Senior Fullback

#### Luverne 40 - Highland Home 0

Luverne over-powered an outclassed but spirited Highland Home team as they won the annual homecoming tilt. The honored class of 1955 saw their alma mater play an outstanding game both offensively and defensively. Paul Dickerson and Jimmy Williams stood out on defense while Luverne's second unit scored three touchdowns in the last half. The half-time ceremony was highlighted by the crowning of the homecoming queen, Miss Vera Wilson, by "L" Club President Stephen Coleman, and the presentation of Miss Football, Martha McDougald. Attendants to the Queen were Olivia Mills and Judy Ray. The day's homecoming festivities were capped off by a dance in the gymnasium after the game.



BEN WILLIAMS  
Senior Quarterback



GLENN DANIEL  
Junior Quarterback



DOUGLAS FINLEY  
Junior Tackle





JOE DEXTER FLYNN  
Junior Tackle



MIKE JONES  
Junior Guard



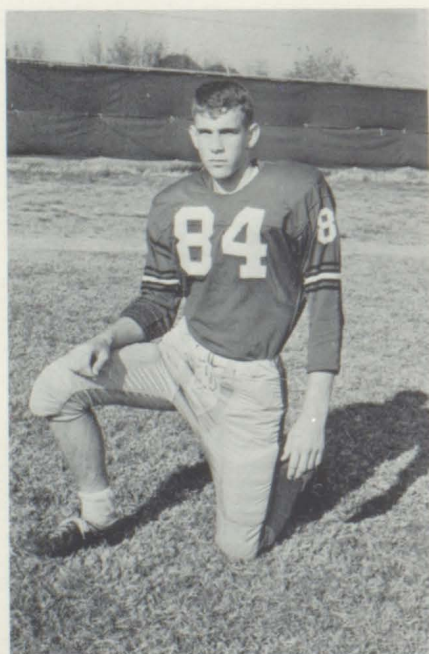
TEENY RUSSELL  
Junior Quarterback

#### Luverne 20 - Troy 14

The Tigers met their toughest test of the season by upsetting the Trojans from Troy with a supreme effort by the entire team. Robert Tomlin and Larry Wyrosdick played outstandingly at defensive end by retaining the Trojan backs. Coach Glenn Daniel received "Coach of the Week" honors for this great victory.

#### Luverne 19 - Brundidge 13

Fresh from a great victory the Luverne Tigers met a surprisingly stubborn Bulldog team and barely squeaked out a victory in the last quarter. Ben Williams and Stephen Coleman led the Tiger offense as each scored touchdowns of more than fifty yards.



WILLIAM M. SIKES  
Junior End



RICHARD SWANNER  
Junior End



RANDY WATTS  
Junior Halfback





LARRY WYROSDICK  
Junior End



BEN BROOKE  
Sophomore Halfback



BOB BROOKE  
Sophomore Fullback

Luverne 7 - Florala 0

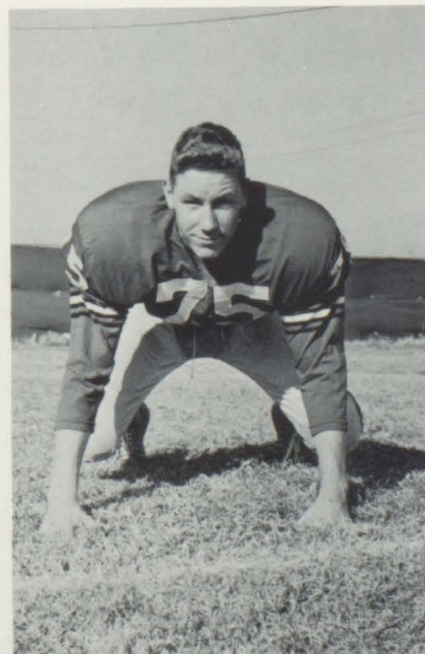
Luverne scored early in the last home game of the season and managed to hang on to a 7 to 0 victory as the defense contained a fighting Wildcat eleven. Drew Elliott and David West played extremely well in the defensive line for the Tigers.

Luverne 12 - Opp 14

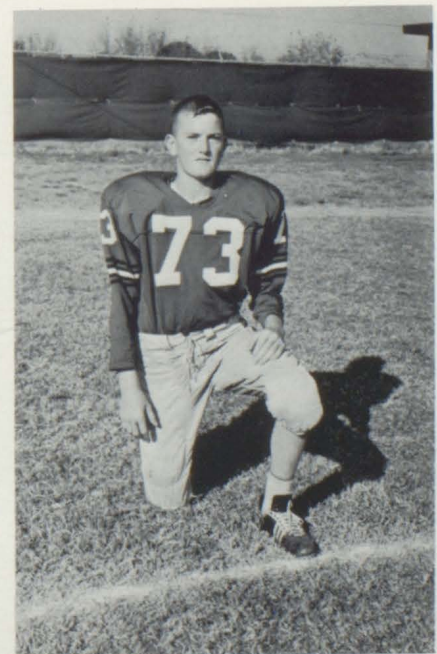
Luverne suffered a heart-breaking defeat at the hands of the Opp Bobcats in which their hopes for the State Champions were erased. Playing outstandingly in the face of defeat were Glenn Daniel and Richard Swanner.



JIMMY CAMPBELL  
Sophomore Halfback



RONNIE COGGINS  
Sophomore Tackle

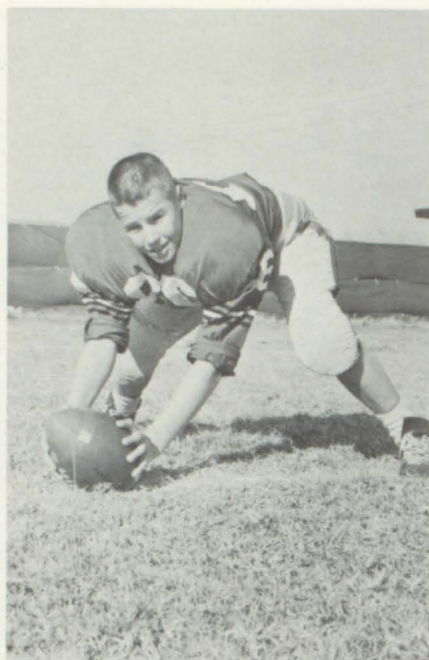


CHARLES HALL  
Sophomore End





BOBBY OWENS  
Sophomore Halfback



JOHNNY PYNES  
Sophomore Center

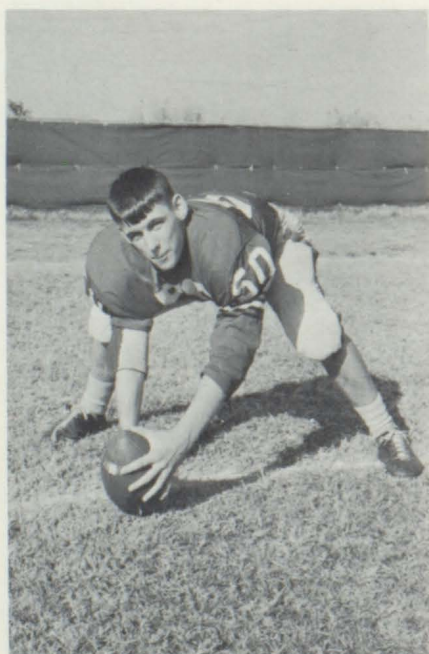


TEDDY VAUGHN  
Sophomore Tackle

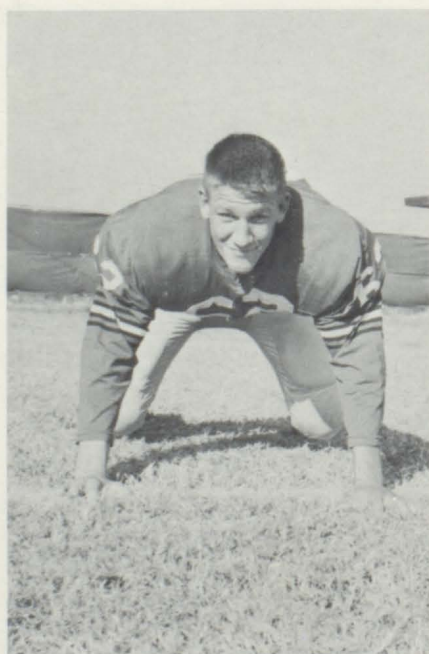
Luverne 41 - Greenville 6

Luverne finished a very successful season by outclassing the Greenville Tigers. The game was played in a steady downpour; however, this did not dampen the spirits of the mighty red and white as the offense rolled up 41 points. This victory gave the Tigers their eighth win of the season against only two losses.

The Panorama Staff would like to commend the well-deserving L.H.S. football team--the players, the managers, and especially the coaches for their never-ending spirit and determination which contributed to one of the most successful seasons in history.



JIMMY WILLIAMS  
Sophomore Center



DAVID WEST  
Freshman Guard



EDDIE LOWERY  
Freshman Guard



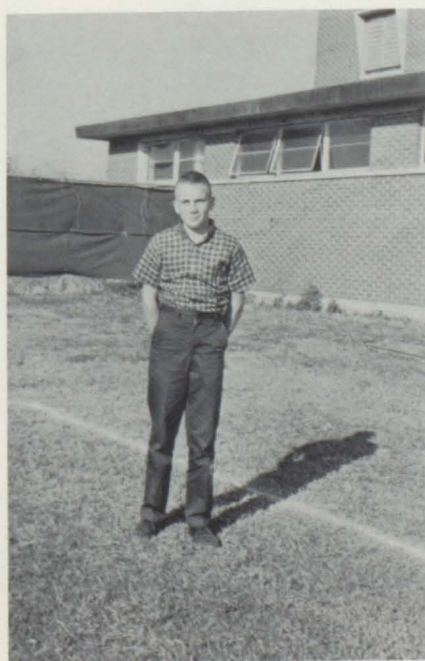


Swanner flies South



Let's twist again

## *Managers*



Jim Perdue



Jimmy Wyrosdick





*Offensive Team*



*Defensive Team*





*"B" Team*



*Coaches*

Carr

Daniel

Sport

Crews



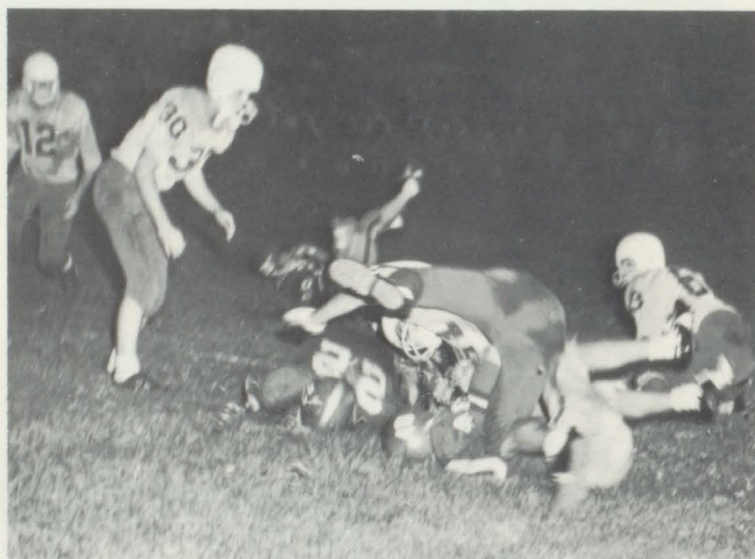
# Action Shots



Touchdown!!!

LUVERNE		GEORGIANA
16	First Downs	10
289	Yards Rushing	58
13	Yards Passing	100
8	Passes Attempted	29
1	Passes Completed	11
2	Passes Int. By	0
15	Yards Penalized	15

LUVERNE		ELBA
13	First Downs	10
233	Yards Rushing	119
56	Yards Passing	14
8	Passes Attempted	5
2	Passes Completed	1
1	Passes Int. By	0
46	Yards Penalized	30



Pile-up!!!



Which way did it go, George???

LUVERNE		ANDALUSIA
13	First Downs	8
218	Yards Rushing	97
28	Yards Passing	71
11	Passes Attempted	4
3	Passes Completed	3
0	Passes Int. By	3
5	Yards Penalized	5



# Action Shots

## LUVERNE

## BRANTLEY

16	First Downs	4
382	Yards Rushing	18
25	Yards Passing	99
4	Passes Attempted	16
2	Passes Completed	6
2	Passes Int. By	1
61	Yards Penalized	5



Watts is tackled!!!



Finley rests!!!

## LUVERNE

## HIGHLAND

17	First Downs	3
264	Yards Rushing	45
61	Yards Passing	0
9	Passes Attempted	4
2	Passes Completed	0
1	Passes Int. By	0
15	Yards Penalized	5

## LUVERNE

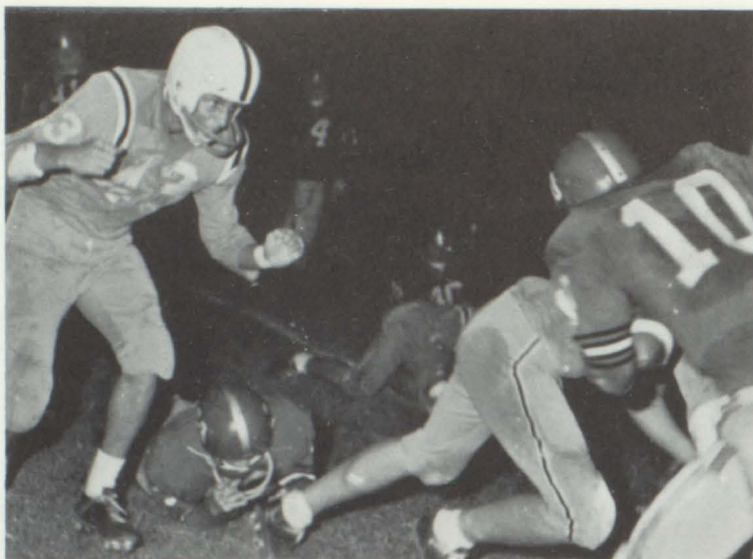
## TROY

10	First Downs	12
95	Yards Rushing	186
77	Yards Passing	78
9	Passes Attempted	12
5	Passes Completed	4
1	Passes Int. By	2
15	Yards Penalized	49





# Action Shots



Williams moves forward!!!

LUVERNE		BRUNDIDGE
12	First Downs	11
295	Yards Rushing	99
10	Yards Passing	106
2	Passes Attempted	13
1	Passes Completed	6
2	Passes Int. By	0
24	Yards Penalized	20

LUVERNE		FLORALA
9	First Downs	5
145	Yards Rushing	92
27	Yards Passing	35
8	Passes Attempted	15
2	Passes Completed	5
2	Passes Int. By	0
35	Yards Penalized	35



A tussle!!!



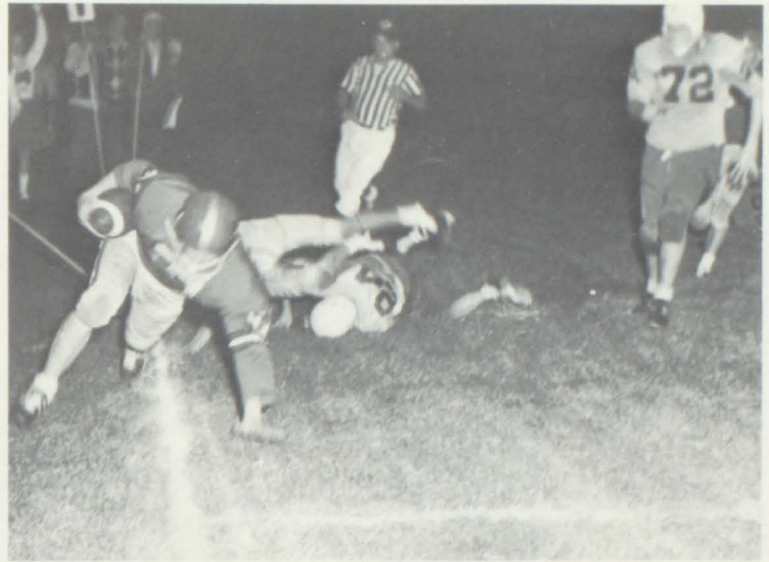
Headless Horsemen!!!

LUVERNE		OPP
10	First Downs	7
161	Yards Rushing	130
37	Yards Passing	39
10	Passes Attempted	3
3	Passes Completed	2
0	Passes Int. By	1
10	Yards Penalized	10



# Action Shots

LUVERNE		GREENVILLE
15	First Downs	9
264	Yards Rushing	47
117	Yards Passing	22
6	Passes Attempted	6
4	Passes Completed	3
0	Passes Int. By	0
35	Yards Penalized	35



Stay off the lines, Coach is watching!!!



# Senior Players

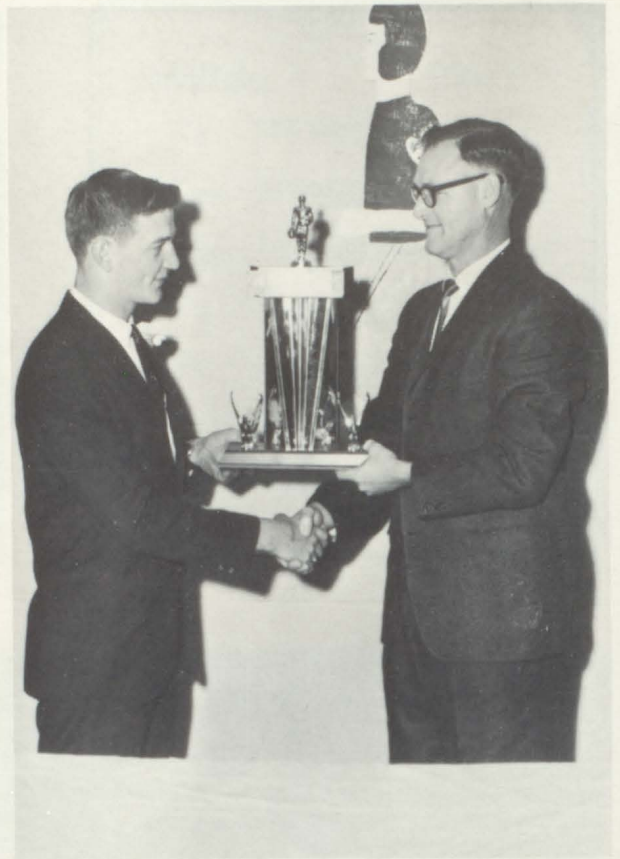
The seniors for the 1964 football team were Johnny Bagwell, Paul Dickerson, Jerry Turner, Morris Tate, Robert Tomlin, Johnny Nichols, Mike Weaver, Ben Williams, Charles West, Lewis Jones, Stephen Coleman, Drew Elliott, John Allen Butler, Rex Majors, Billy Davis, Jerry Holladay, and Chippy Sipper. Their leadership and capability shone throughout the season as they led a mighty Tiger Team.



# *Trophies*



The Lions Club Sportsmanship Trophy  
Benjamin Williams



Steve Hicks Most Valuable Player Award  
Charles West



John Ross Hicks Lineman Trophy  
Drew Elliott and Johnny Bagwell



John Giddens Memorial Trophy  
Benjamin Williams



## *Cheerleader Sponsor*

*Mrs. Catherine Norman*



## *"B" Team Cheerleaders*



Lynn Folmar, Dianne Daniel, Gwen Franklin, Head Cheerleader Jeannie Norman, Betty Reader, Cheryl Moore, Linda Bell, Sally Hicks.





Mary Ann Helms  
Senior  
Head Cheerleader



Jane Jones  
Sophomore



Marilyn Strickland  
Sophomore



## *Varsity*

Go-Go Watson  
Junior







Kathryn Campbell  
Senior



Judy Ray  
Sophomore

## *Cheerleaders*



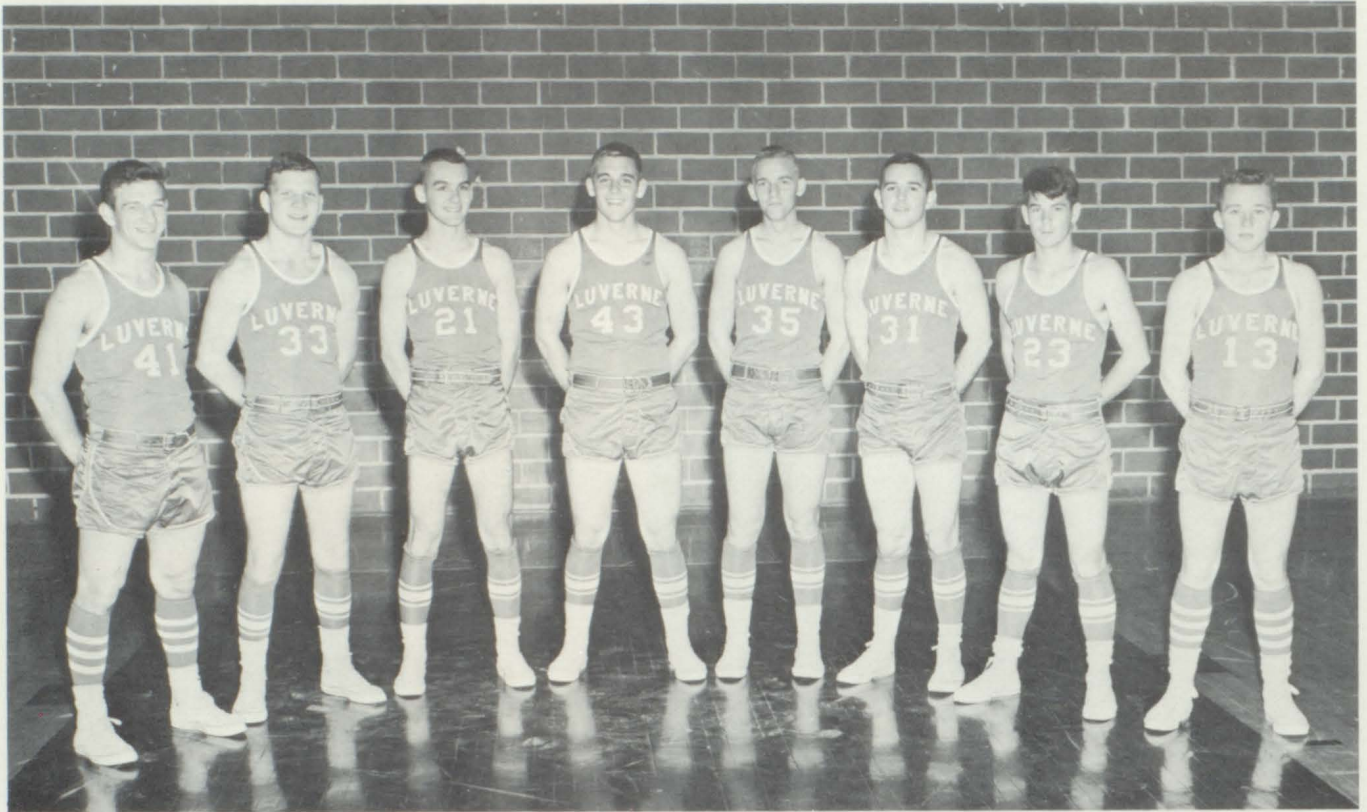
Sally Curtis  
Sophomore



Carol Kendrick  
Sophomore



# *Basketball*

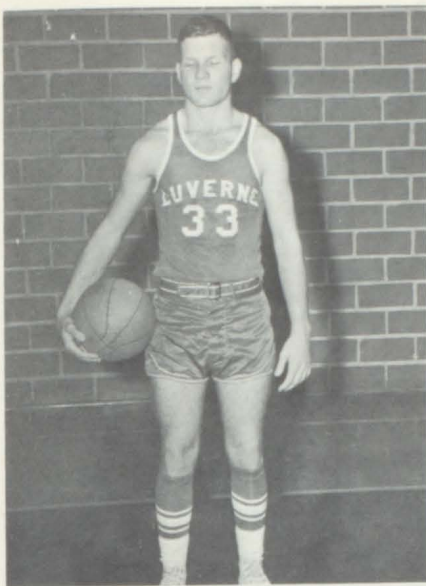


## *Tigers of 1965*



*Most Valuable Player*  
*Drew Elliott*





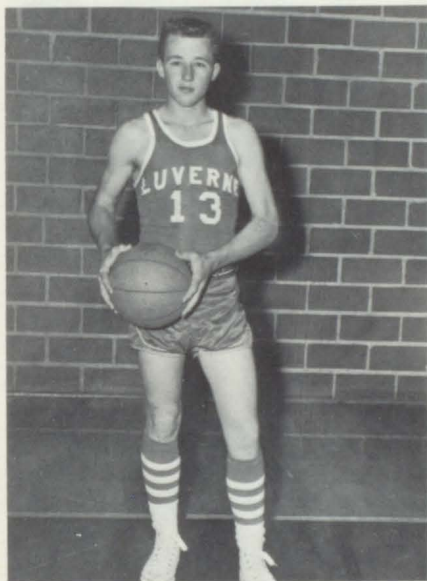
Stephen Coleman



Glenn Daniel



Drew Elliott



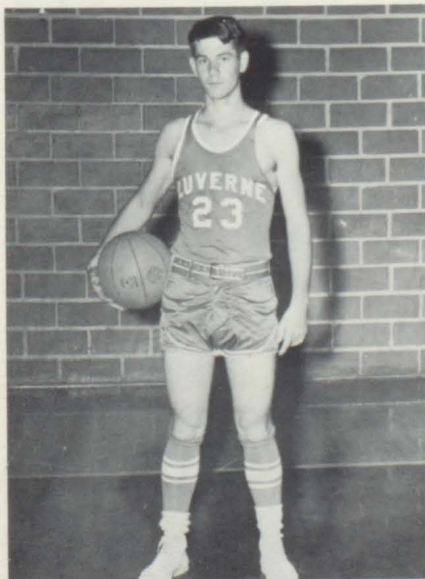
Teeny Russell



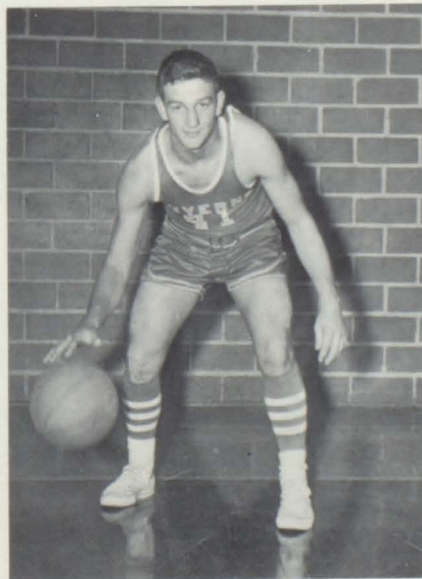
Charles Sipper



Chippy Sipper



Richard Sport



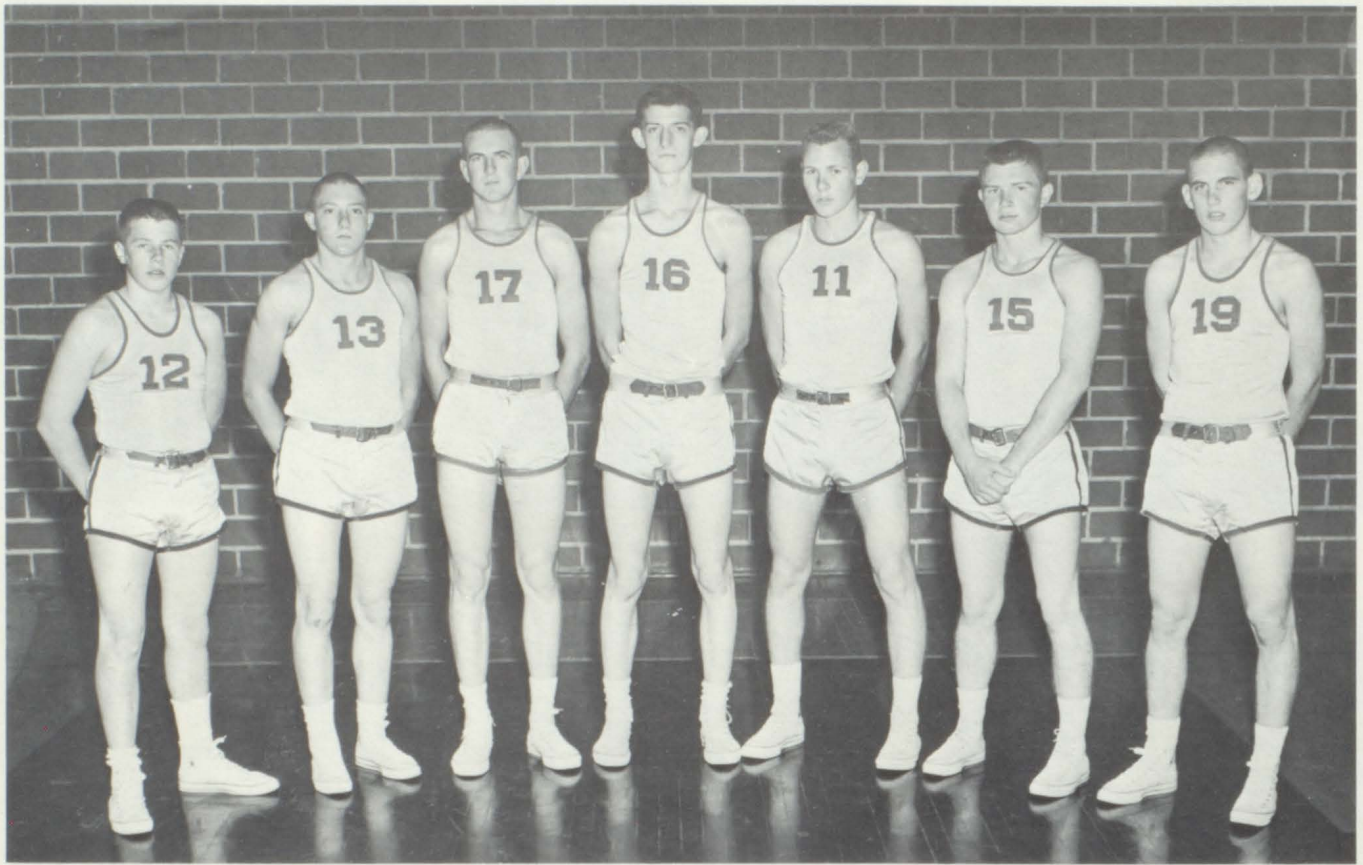
Charles West



Ben Williams



## *"B" Team*



## *Junior Team*





# Baseball



## District II Champions

### SEASON RECORD

Luverne	5	Dozier	1
Luverne	2	Ozark	13
Luverne	5	Enterprise	2
Luverne	15	Highland Home	5
Luverne	0	Greenville	2
Luverne	2	Brantley	3
Luverne	0	Troy	2
Luverne	7	Brantley	0
Luverne	6	Highland Home	4
Luverne	12	Ozark	7
Luverne	8	Dozier	1
Luverne	5	Enterprise	3
Luverne	4	Greenville	3
Luverne	7	Troy	1

### District Championship Games

Luverne	12	Greenville	4
Luverne	8	Opp	3
Luverne	13	Dale County	0

Won 13  
Lost 4



# Baseball



Johnny Bagwell



Drew Elliott



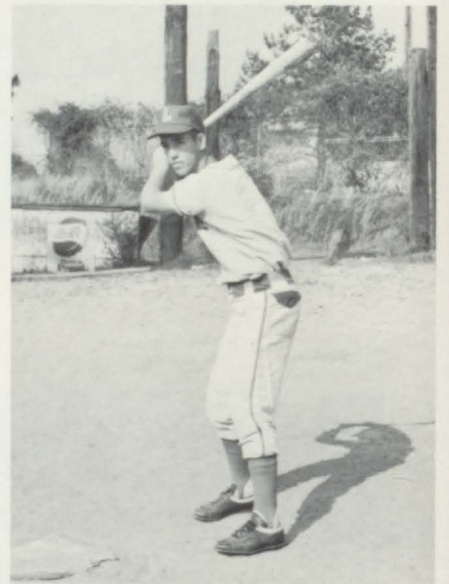
Bill Golden



Johnny Nichols



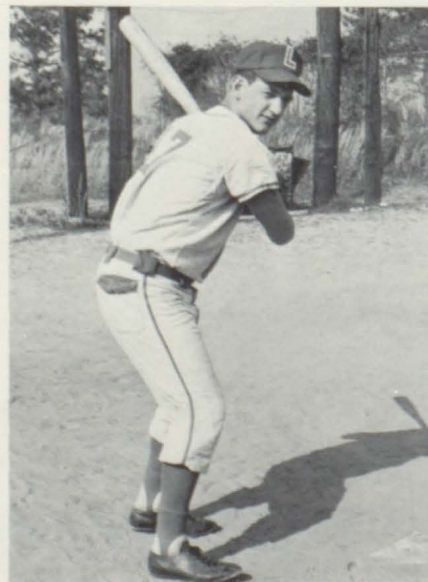
Richard Sport



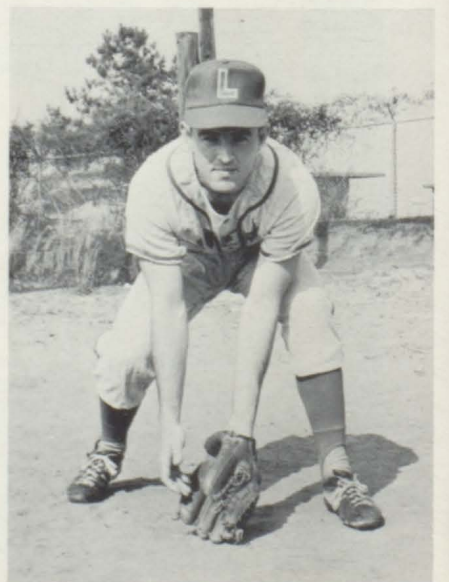
Morris Tate



Mike Weaver



Charles West

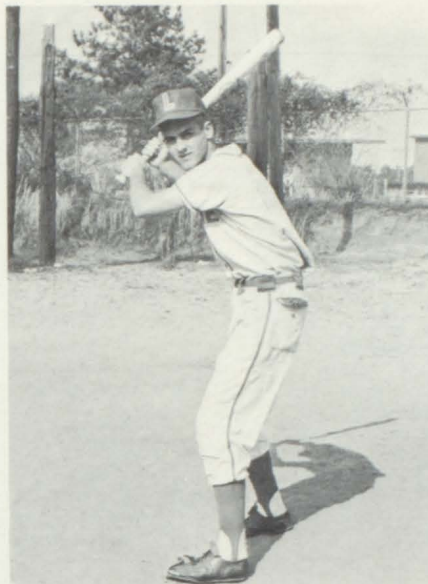


Ben Williams





Terry Carter



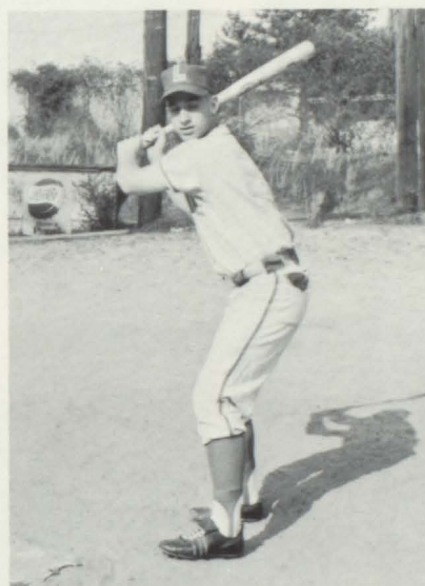
Glenn Daniel



Teeny Russell



Hugh Sikes



Randy Watts



Johnny Pynes



Ben's Baseball Ballet



# Baseball Snaps



# Golf



Stephen Coleman, Drew Elliott, Glenn Daniel, Ben Williams.





*Spirit In Our Life*



# Homecoming Day



*The Mighty Seniors*



*School Spirit Marches On*



*Victory - That's Our Cry*



*The Four Lovelies*



*Our Band In Action*



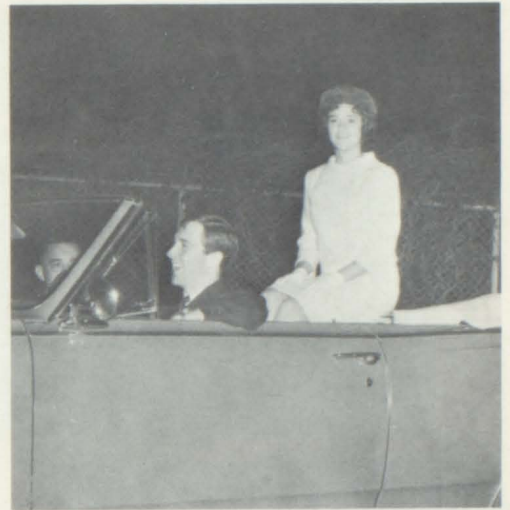
*Panorama Car*



# Homecoming Night



*We Honored the Class of '55*



*Miss Football*



*Reigning Royalty*



*Miss Homecoming and Attendants*



*The Queen Is Crowned*



[ 79 ] *The End of a Wonderful Day*



# Beauty



*"Alabama Jubilee"*



*"The Holy Hour"*



*"When You Wore a Tulip"*



*"I Want to Hold Your Hand"*



*"Singing In the Rain"*



# Pageant



*"Chinatown"*



*"Blue Hawaii"*



*"Wagon Wheels"*



*"Basin Street"*



*"Some Sunday Morning"*



*"Bill Bailey"*



*"Dixie"*





*An Enchanted Evening*  
*Jr. - Sr. Banquet*



*Go, Go - Go, Go!*



*Carolyn Sings*





*Sport Spectacular*

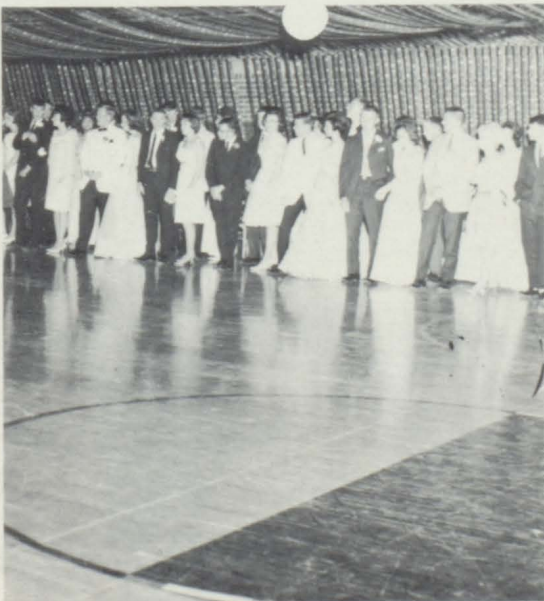


*The Chessmen*

*And  
Dance*



*Scandalous Gossip*

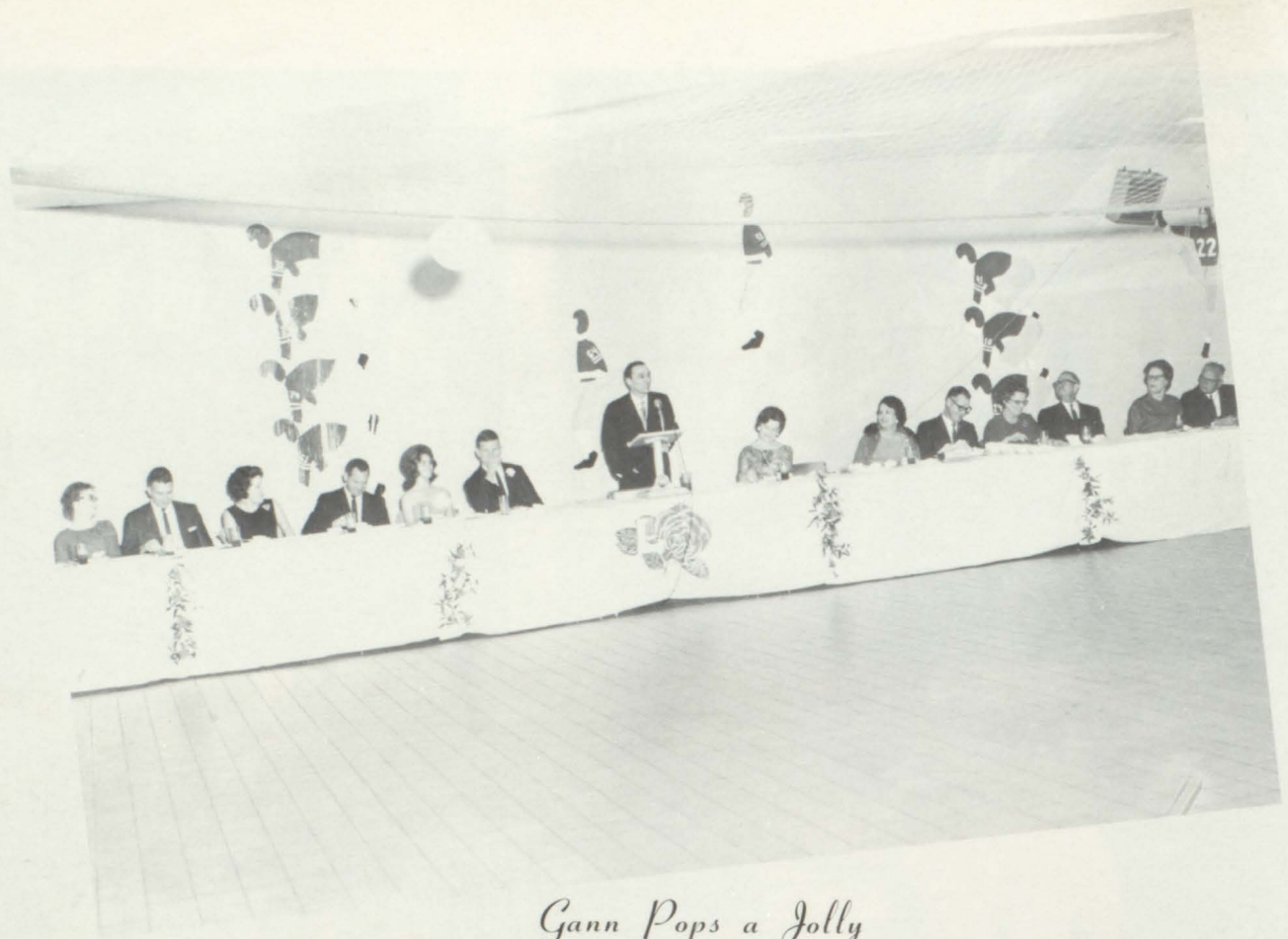


*Wallflowers*



[ 83 ] *Dancing Cheek to Cheek*





*Gann Pops a Jolly  
"L" Club Banquet*



*Our Senior Stars Take a Bow*



# Dance



*The Tigers Dance*



*A Hard Day's Night*

## Initiation



*The Three Musketeers*



*Air Raid*



*"She Ain't Purty, But She Can Sho Type"*



*Detention Hall*



# Band Snaps



*Our Director*



*The Band at Attention*



*The Band Entertains at Half - Time*



*Pat Walker - Best Bandsman of 1965*



*Pay Attention Mike!*



[ 86 ] *And the Band Plays On*



# *Washington Tour*



*Midnight Gossip*



*Back into the Bus*



*What's Happening Behind That Shirt?*



*Peace and Quiet at Last*



*Representative Dickenson and  
Ambassador Perdue*



*Are You Lost Pat?*





*Our Advisor, Mr. Carter*



*Big Man, Mr. Farmer*

# FFA



*Our Officers, Advisor, and  
Chapter Sweetheart*



*Our Prize Winning Quartet*





*Our Future Farmers at Work*

## *Snap*



*Our Scholastic Award Winner*



*Our Chapter's Star Farmer*



# *F H A Snaps*



*Our Winning Exhibit at State Fair*



*'64 - '65 Officers*



*4th Period Girls at Work*



*Our New Kitchen Equipment*



*F H A Quartet*



*Betty Crocker Homemaker Award -  
Rita Richburg*



## 4 - H Snaps



*Our 4 - H Club*



*The Lamp Making Project*



*Richburg Brothers at Work*



*Kathryn Teaches the Girls to Sew*



*Mary Helen Receives Instructions*





*Changing of the Guard*



*Test Time at L H S*



*National Honor Society Initiation*

## *Horse*



*Battle of the Mouths*



*Scott Performs*





*I Go Out With the Crowd*



*The Gym Gang*



*Are the Seniors Worth It, Girls?*



*While You're at It, Martha,  
Button His Lip!*



*Lights, Camera, Action*

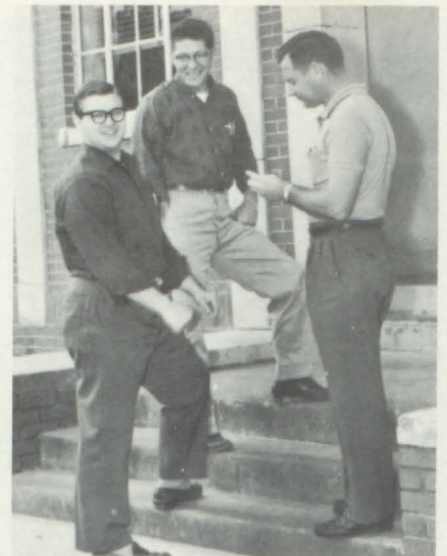




*Mrs. Norman and Stella  
Sing a Duet*



*"Don't Hit Him Drew!"*



*The Three Stooges*



*Larry, Show Us Too*



*Mrs. Capps, Was It That Bad?*

## *Campus*



*Caught in the Act*



*You Are Under Arrest!*

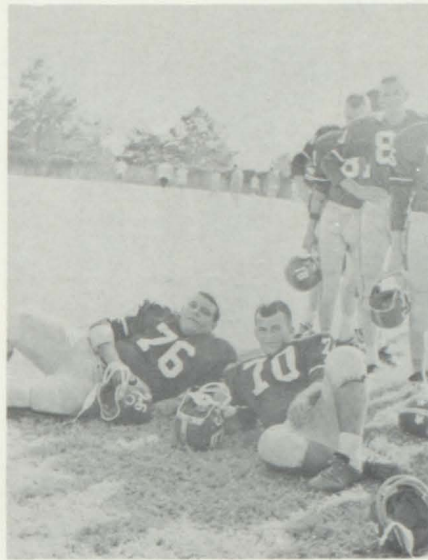


*Smile, You're on  
Candid Camera!*





*Hup Two, Three, Four*



*Our Vigorous Team*



*Our Photographer*



*Papa Speaks*

## *Capers*



*Really Now!*



*Put Them Back LaRue*



*Skipping???*



*Ou Est Tu, Mon Amour*





*Kindergarten Graduation*

*Didn't*

*We*

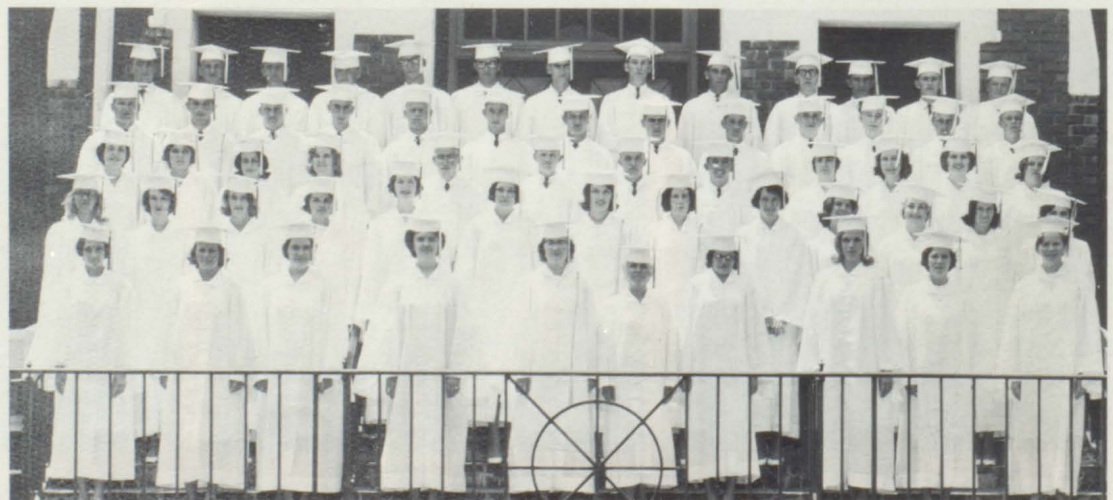
*Have*



*Fourth Grade Society*

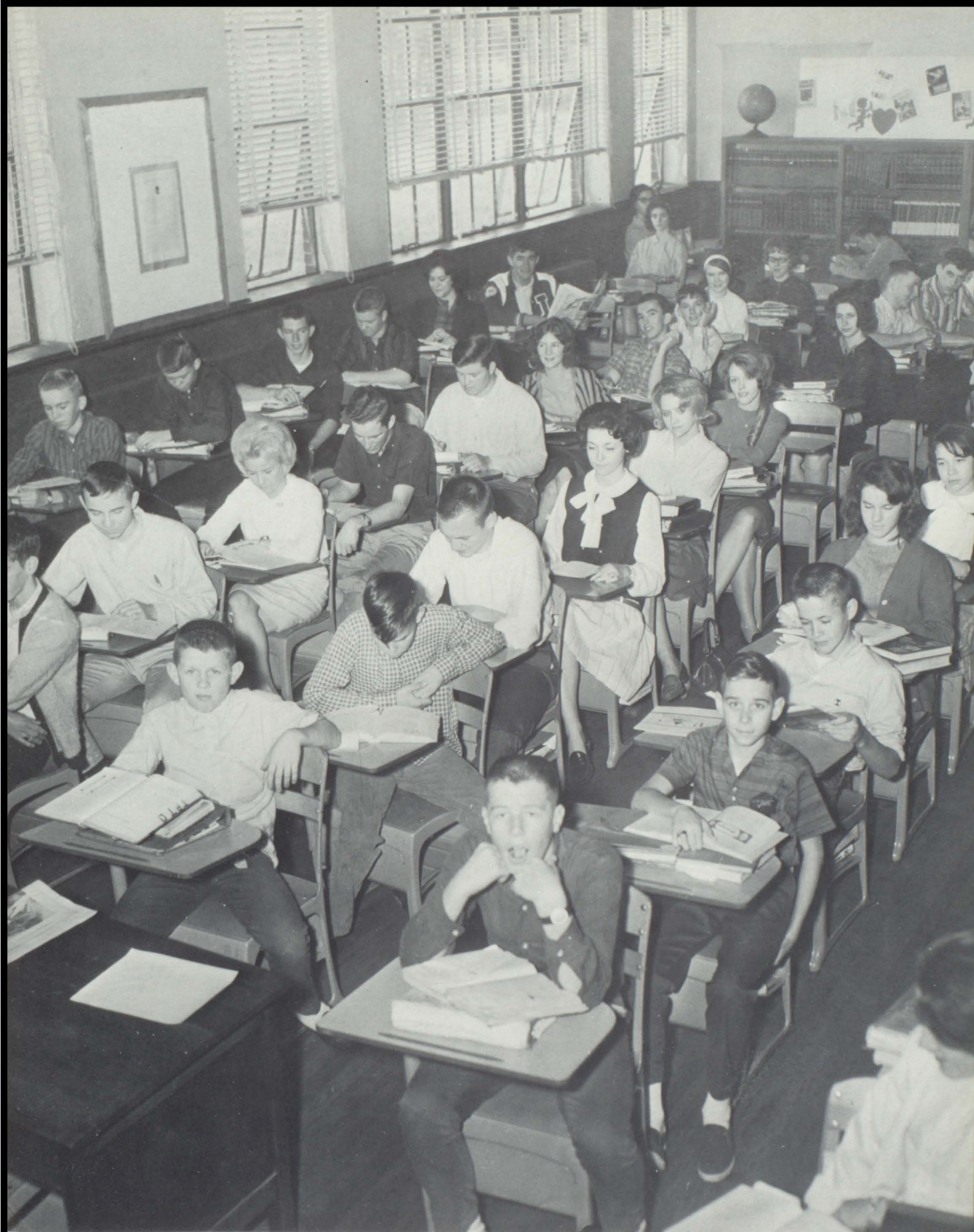
*Fun*

*!!*



*Success!!*





*"Pride In Our Work"*



# Junior



Curtis Armstrong  
Betty Ballard  
Mary Helen Bass  
Betty Beasley  
Alan Bell

PHOTO  
NOT  
AVAILABLE



Charlie Ray Bell  
Kenneth Bradley  
Richard Braswell  
Charlotte Broadway  
Johnny Broadway



Shirley Broadway  
John Brooke  
Audrey Burgans  
Danny Burgans

Linda Burgans  
Becky Campbell  
Arlene Cole  
Judy Dorman



Keith Duncan  
Walter Folmar  
Starling Haire  
Sandra Harbin

PHOTO  
NOT  
AVAILABLE



Kenneth Haws  
JoAnne Holland  
Lycrecia Holland  
Margaret Holley  
Cassie Holliday

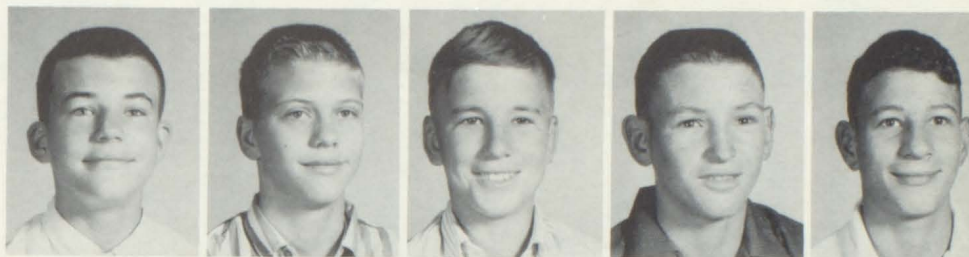


Billy Holmes  
Jack Holmes  
Becky Horn  
Tommy Horn  
Charles Hurley  
Christie Jackson



# One

Warren Jackson  
Keith Jayroe  
Fred Jeffcoat  
Jimmy Jeffcoat  
Danny Johns



Rose Jones  
Patricia Jordan  
Helen Kelley  
Sandra Kelley  
Keith Kennedy



Sherry Kent  
Petricia Kettler  
Janice Kyker  
Dianne Killough



Wanda Kilpatrick  
Jerry King  
Carroll Langford  
Ruth Lewis

Bruce Long  
Ann Lowe  
Wendle Mancil  
Barbara Manning



Donnie Manning  
Lesa Kay May  
Hope Mills  
Susie Milton  
Lanett Mount



Steve Nichols  
Benny Owens  
Charles Owens  
Mary Peek  
Joe Petrey  
Tony Pettus





# Junior One



Faye Petty  
Bonnie Pittman  
Doris Pouncey  
Bonnie Powell  
Nancy Rhodes



Betty Richburg  
Donnie Robbins  
Randy Rogers  
Wayne Rolling  
Susan Russell



Patricia Sexton  
Terry Shirley  
JoAnn Smith  
Jerry Stokes

Denny Stollings  
Darlene Tatum  
Madonna Taylor  
Ronnie Tompkins



James Ed Turner  
Lynann Walker  
Ronny Wallace  
Rebecca Whitman



Sybil White  
Louise White  
Karen Wilkerson  
Kenneth Williams  
Linda Williams



Randy Williamson  
Donald Wilson  
Barbara Wood  
Jenny Wyatt  
Jimmy Wyrosdick



# Junior Two

Charles Andress  
Linda Armstrong  
Kyle Baggett  
Ed Beasley  
Linda Beasley



Gleen Bees  
Charlotte Bell  
Janice Bolling  
Jim Boothe  
David Bond



Wendell Bond  
Faye Bozeman  
Debbie Brown  
Tommy Capps  
Virginia Carr



Patsy Clements  
Diane Daniel  
Scott Elliott  
Sam Ellison



Lana English  
Gwen Franklin  
Judy Free  
Betty Golden  
Paulette Henderson

Sandra Holland  
Sybillene Holmes  
Bill Jim Holmes  
Brenda Jeffcoat  
Sherrill Jeffcoat



John Jones  
Butch Kilpatrick  
Diane Kolb  
Mary Helen Lowe  
Julia Maddox



Linda McSwean  
Steve Miller  
Roy Mills







Cheryl Moore  
Jeannie Norman  
Winnie Norton  
Carolyn Owens  
Cleo Parker

# Junior Two



Phillip Partridge  
Jane Perdue  
Jim Perdue  
Laura Petrey  
Tommy Petrey

Harry Phillips  
Kenneth Phillips  
Benjie Pynes  
Diane Qualls  
Betty Reeder



Danny Rhodes  
Jimmy Rhodes  
Mahlon Richburg  
Glenda Rushing



Hamp Russell  
Joy Russell  
Martha Sanders  
Deborah Shirley  
Larry Smith



Wanda Smith  
Kenneth Stephens  
Dwight Tate  
Cathy Thrower  
Martha Vines



Mary Lucy Welch  
Lewis West  
Rita West  
Grace Williamson  
Faye Williams



Jerry Williams  
Dick Wood  
Bobby Wright



Bonnie Bagwell  
Janice Ballard  
John Bass  
Bobby Beasley  
Thomas Beasley



Linda Bell  
Jane Berger  
Judy Broadway  
JoAnn Burgans  
Dianne Butler  
Duane Byrd



Melissa Campbell  
Ronnie Campbell  
Diane Clements  
Leo Cobb  
Barbara Cowarte



Chris Curtis  
Kay Davis  
Ginger Kay Davis  
Janice Defee



Janice Dorman  
Charles Duncan  
Shelia Duncan  
Sandra Ellison  
Lynne Folmar

Judy Franklin  
Anne Franklin  
Sue Garner  
Charlotte Gipson  
Glenda Graydon



Brenda Haire  
Steve Helms  
Sally Hicks  
James Holliday  
Linda Hollon  
Cornelia Horn



# *Junior* *Three*

George Hudson  
Jo Jeffcoat  
Kline Jeffcoat  
Larry Jordan





# Junior Three



Allen Kennedy  
Sharon Kent  
Annette Lovett  
Eddie Lowery



Joe Money  
William Moody  
Martha Morgan  
Billy McSwean  
Frances McVay  
Johnny Nichols

Bill Norman  
Lenora Paul  
Jill Perdue  
Patsy Petrey  
Linda Pouncey



Bob Perdue  
Tom Ray  
Danny Rogers  
Dianne Rogers  
Joanne Rogers



Buddy Schofield  
Sonny Schofield  
Robert Sikes  
Linda Smith  
Butch Speed



Juawana Tatum  
Bobby Thompson  
Patricia Tomlin  
Lenore Tomlin  
Johnny Trantum



Raymond Trotter  
Joy Turner  
Lois Turner  
Roy Vickery  
Donald Vincintore  
Karen Weaver



David West  
Ronald Wilkerson  
Wanda Williamson  
Evelyn Wood

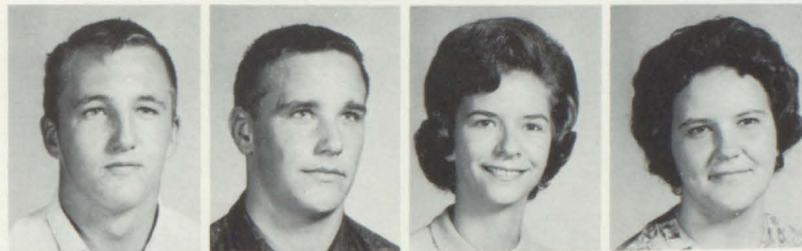


# Senior Ones

Donnie Baggett  
Joan Ballard  
Judith Ballard  
Glenn Bolling



Bob Brooke  
Ben Brooke  
Brenda Bush  
Virginia Butts



Jimmy Campbell  
Donnie Carter  
Ronnie Coggins  
Linda Compton



Douglas Cornett  
Sammy Curtis  
Sally Curtis  
Sara Nell Driskell



Martha Free  
Windham Furr  
Jimmy Garner  
Lavoy Golden

James Grayson  
Jane Greer  
Carolyn Hall  
Charles Hall



Nelda Holley  
Sheila Horn  
June Hughes





# Senior



David Jeffcoat  
Linda Jeffcoat  
Mary Helen Jeffcoat  
Susan Jeffcoat



Lynn Johns  
Jane Jones  
Mike Jordan  
Bernice Kelley

Billy Keller  
Carol Kendrick  
Larry Kent  
Carolyn Kolb



DiAnne Long  
Dora Ann Lowe  
Marsha Gayle Martin  
Dianne Mills



Gary Mitchell  
Billy Nichols  
Doris Odum  
Kenneth Odum



Bobby Owens  
David Pippin  
Eddie Phillips  
Danny Pope



Johnny Pynes  
Judy Ray  
Gloria Richburg

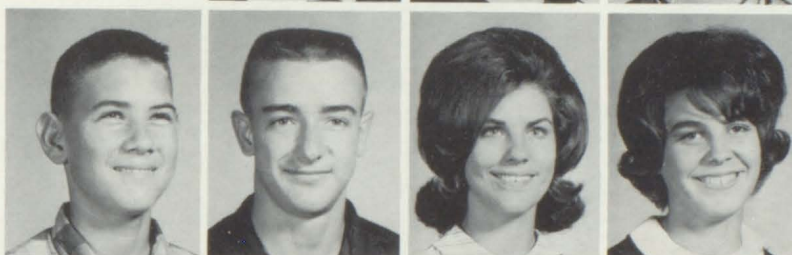


# Ones

Linda Rogers  
Laura Jo Sanders  
Wayne Sanders  
Betty Sexton



Tommy Shirley  
George Smith  
Elsie Stokes  
Marilyn Strickland



Terry Styron  
Dale Summerlin  
Sandra Swanner  
Janice Thaggard



Edna Tidwell  
Larry Tomlin  
Linda Turner  
Ronny Turner  
Teddy Vaughn

PHOTO  
NOT  
AVAILABLE



Stanley Watson  
Sheila Weaver  
Shirley West  
Jimmy Williams

Judy Williams  
Gloria Williams  
Janice Williamson  
Mary John Wilson



Francis Wilson  
Billy Witherington  
Jo Ann Wood  
Sue Wood





# Senior

Kenneth Acreman  
Ferman Acreman  
Wayne Ballard  
June Ballard  
Gail Baggett

Malcolm Butts  
Terry Carter  
Glen Daniels  
Linda Defee  
Danny Duncan

Elaine Duncan  
Joan Duncan  
Douglas Finlay  
Joe Dexter Flynn  
Gail Fowler

Terry Franklin  
Larry Free  
Dana Free  
Kay Granger

Lynda Greer  
Fran Gregory  
Kenneth Helms  
Nancy Hettinger

Bobbie Hicks  
Linda Holliday  
Donald Hilburn  
Charlotte Hudgens

Janice Johnson  
Mike Jones  
Mildred Jordan  
Linda Killough

Gary Killough  
Carolyn King  
Barbara King  
Larry Ledbetter



# Two

Dennis Long  
Sue McDougald  
Layton McLeod  
Randolph McLendon  
Judy McVay



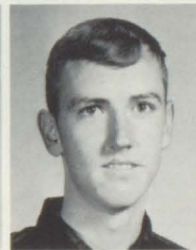
Olivia Mills  
William Moody  
Mary B. Morgan  
Carolyn Phillips  
Johnnie Powell



Elaine Raley  
Irvin Russell  
Glenda Sanders  
Jack Schofield  
Elaine Schofield



Kathleen Sexton  
Ann Sikes  
William Sikes  
Hugh Sikes



La Juan Sipper  
Eugene Smith  
Martha Styron  
Mike Summerlin  
Cathy Summerlin



Richard Swanner  
Linda Talley  
Linda Talley  
Marie Thaggard

Go-Go Watson  
Randy Watts  
Cheryl Welch  
Charlotte West



Linda West  
Jimmy Williamson  
Pat Williamson  
Larry Wyrosdick





# *Snap*



*No Wonder Your Drawers Droop, Drew*



*1,001 - 1,002 - 1,003...*



*Ivey Incorporated*



*Don't Just Stand There, Norman!*



*Don't We Wish All Classes Were Like This?*



*Expecting Rain, Pat?*

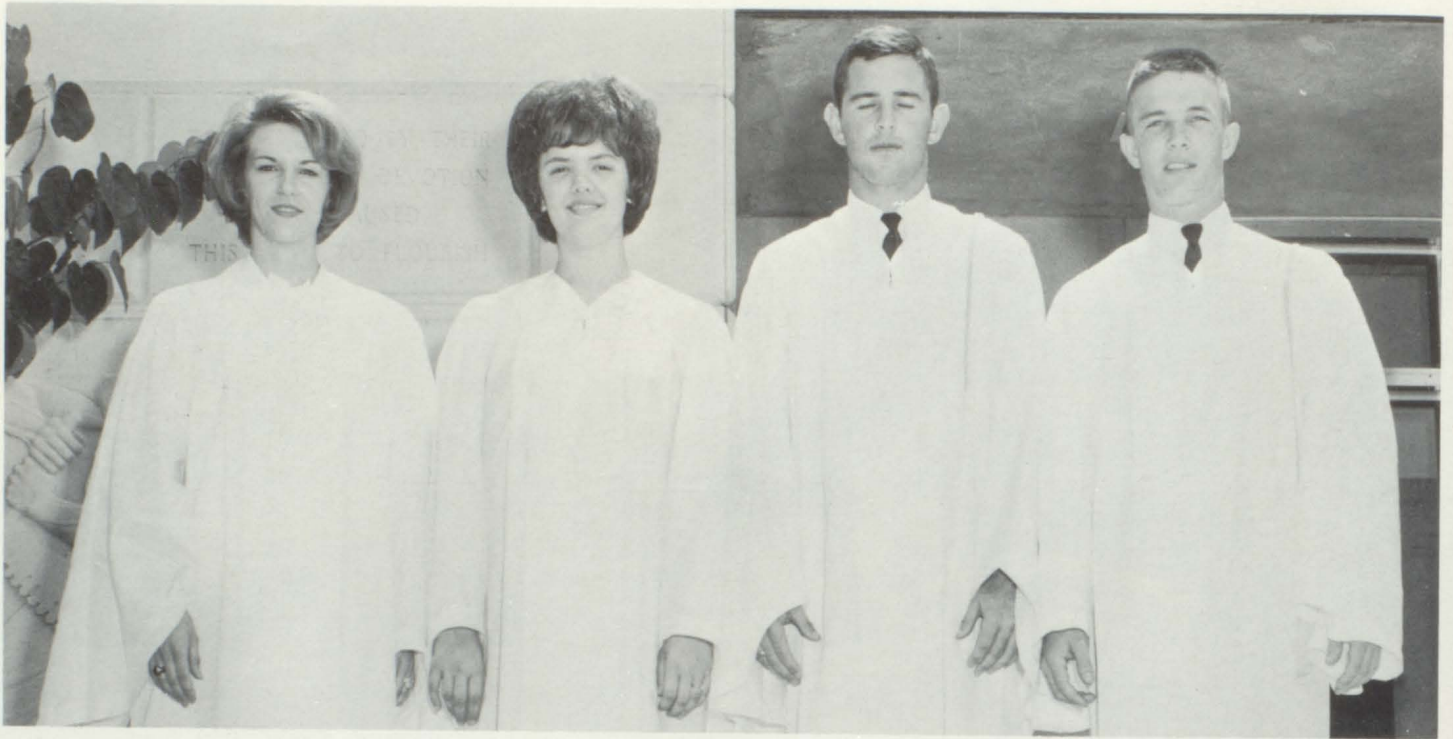




*Graduation - Not the end but the beginning*



## *Our Leaders*



President-Jerry Turner, Vice-President-Ben Williams, Secretary-Brenda Killough, Treasurer-Sherron Turner.

## *Senior Dedication*



Bill Welch

Bill Henry Welch, who completed eleven grades and began his senior year with the Class of 1965, was not able to finish this year due to his health. We, the Senior Class, recognize his place among us, and can never forget the years we spent together as classmates. We think of him as an outstanding student and a wonderful friend, and it is to him that we wish to dedicate this Senior Section of the 1965 PANORAMA.

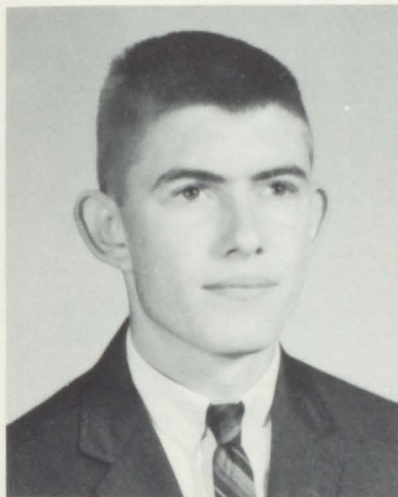
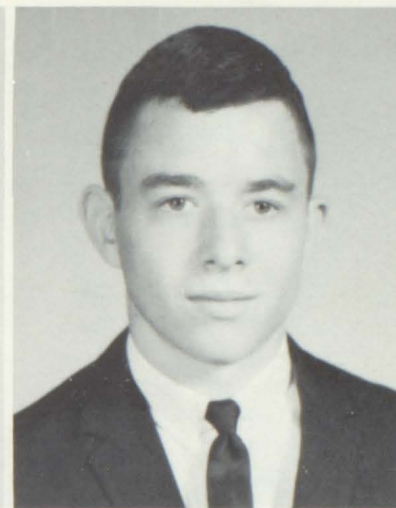


PATRICIA CLEONE ALFORD

"Likeable because she is herself with fine honest and sincere ways."

ROBERT EUGENE AUSBON

"Young fellows will be young fellows."



RONALD EDWIN BAGGETT

"His unassuming air conceals hosts of ideas and worthy ideals."

JOHN DANIEL BAGWELL

"A good heart is better than all the heads in the world."



JEANNE ANNETTE BERGER

"A lovely lady garmented in her own light."

JOHN ALLEN BUTLER

"Common sense is instinct and enough of it is genius."

DOREENE BYRD

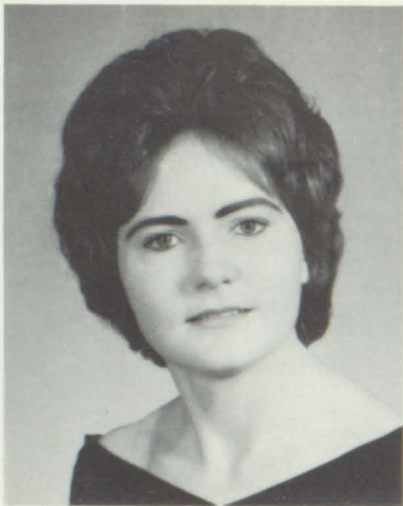
"Noble deeds that are caused by a sincere heart are most esteemed."

KATHRYN CAMPBELL

"She's one who has won respect and admiration justly."







MARTHA ANN CARLILE

"To her, happiness is like a crystal--fair and exquisite and clear."

DOROTHY LaRUE CARR

"An earnest worker whose reward should be the best."

STEPHEN LANIER COLEMAN

"It's faith in his dreams that keeps a man on top."

CLARICE LOUISE CURTIS

"Give me a room where every nook is dedicated to boys."



DANIEL PHILIP CURTIS

"Youth comes but once in a lifetime."

WILLIAM MARTIN DAVIS

"An all round sport of the best sort."

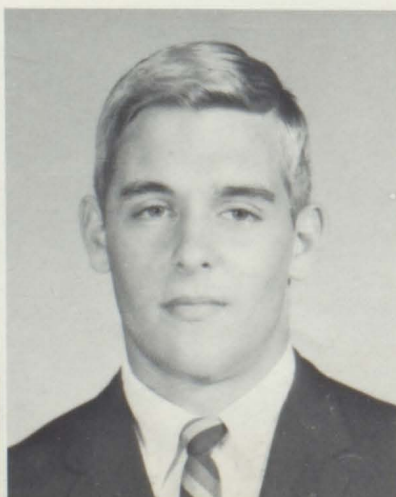


PAUL HENRY DICKERSON, JR.

"A Ford is my chariot, I shall not walk."

ANDREW BEALL ELLIOTT

"He never lets studies interfere with his high school education."



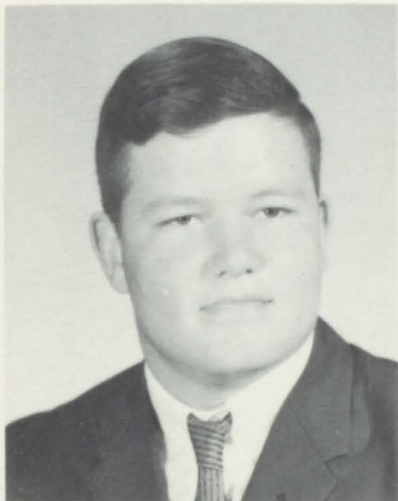


PATRICIA ELAINE GAFFORD

"It's nice to be natural, when you're naturally nice."

BILL GOLDEN

"I do the difficult immediately; the impossible may take a little longer."

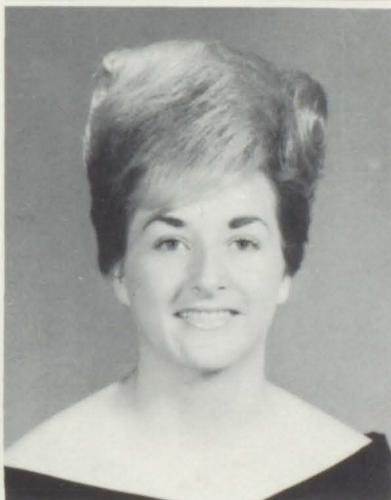


WILLIAM DAVID GOLDEN

"The surest way not to fail is to determine to succeed."

MARY ANN HELMS

"Charms strike the sight, but merit wins the pearl."



JERRY THOMAS HOLLADAY

"I try all things; I achieve what I can."

JUDY ALICE HYBART

"The rule of my life is to make business a pleasure and pleasure my business."

LEWIS HAROLD JONES

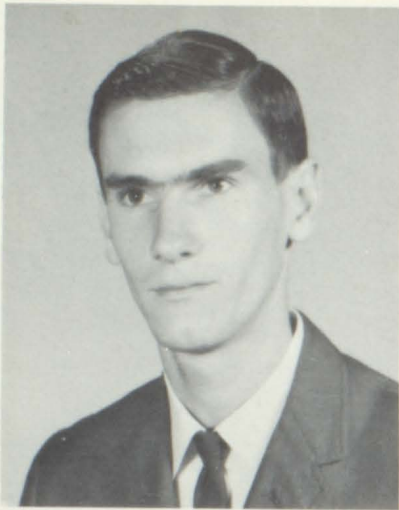
"He loves merriment and lives with fun."

GWENDOLYN SUE KELLEY

"A woman's honor knows no false pride."







JERRY GAYLE KELLEY

"Leave silence to the saints, I am but human."



BRENDA JOAN KILLOUGH

"Her talents are as many as the leaves on the trees."

PENELOPE LOUISE KING

"Fun hidden in a cloak of silence."

JANICE LaNELL LITTLE

"It is a merry heart that hath many friends."



JANICE ELAINE McCARTHA

"A true friend is more priceless than gold."

MARTHA HELEN McDOUGALD

"She who sows courtesy reaps friendship."



MARY ALICE McVAY

"Silence is an excellent thing."

REX ALTON MAJORS



"I have to live with myself, so I want to be fit for myself to know."



NANCY SUZETTE MASON

"Full of fun and mischief, likes doing things she shouldn't do."

IDA CHARLOTTE MEGGINSON

"Her life has many a hope and aim."



MARGARET JOANNE MILLS

"I am one of the few people in the world without worries."

LUTHER DEAN MILLS, JR.

"He likes to hunt, but what for."



ANNETTE MITCHELL

"She burned the midnight oil, but not always for studying."

VIRGINIA MOORE

"Always doing something, and doing it well."

BRENDA FAYE MOSES

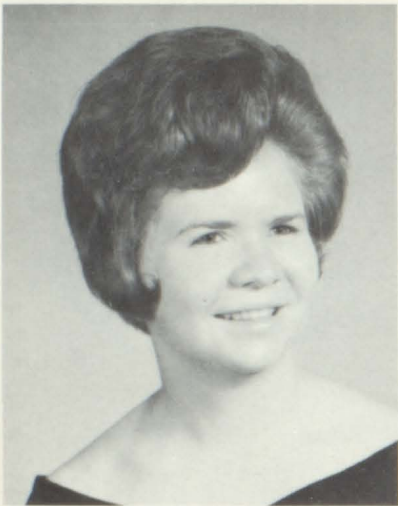
"A dimpled smile that melts the hardest heart."

JOHNNY WAYNE NICHOLS

"When duty whispers low, Thou must, the Youth replies, I can."







PATRICIA PERDUE

"Let me speak first, then I will sit down."

MAMIE RUTH REVIS

"Goodness is love in action."



STELLA LENORA REYNOLDS

"When love and skill work together, expect a masterpiece."

RITA FAYE RICHBURG

"I believe that every right implies a responsibility; every opportunity a duty; every possession an obligation."

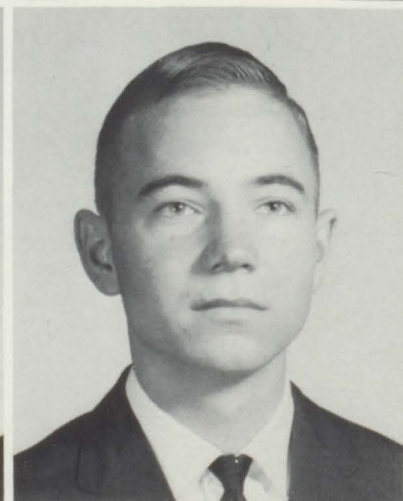


FOYE ELAINE RUSHING

"Her cheerfulness adds to the joy of the group."

EDWARD EUGENE SANDERS

"His honor is his honest thought, and his truth his utmost skill."



BETTY JEAN SCHOFIELD

"She has the greatest of gifts, that of making friends."

CHARLES ALTON SIPPER

"He is one whom we safely depend on."



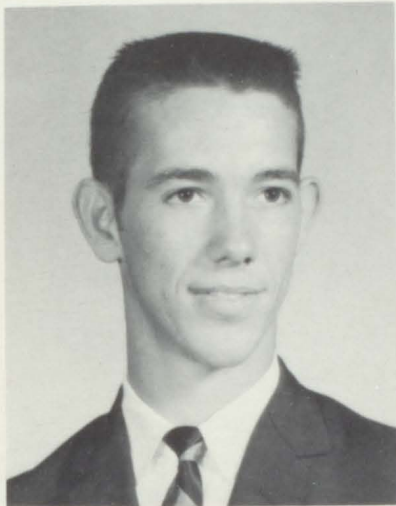
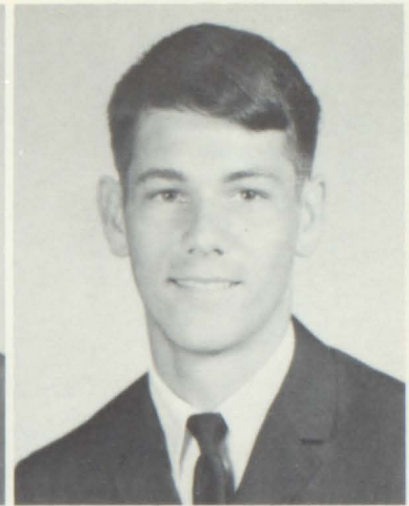


SAMUEL VERNON SIPPER

"We'll wager a penny you'll never find anyone that's more of a sportsman true."

RICHARD BRYAN SPORT

"He studies and studies--once in a while."



JAMES MORRIS TATE

"A good disposition he possesses."

MARTHA RACHEL TOMLIN

"Her ways are of pleasantness, and all her paths are peace."



NANCY SUE TOMLIN

"A clear heart is an excellent thing."

ROBERT LEWIS TOMLIN

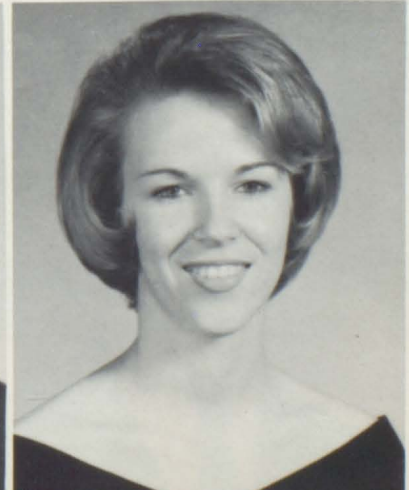
"When people agree with me, I always feel that I might be wrong."

JERRY ROSCOE TURNER

"Earnest in his work, whole-hearted in his play, noble in his thought--what more is there to say."

SHERRON MORROW TURNER

"You can catch a sunbeam when she smiles your way."







LINDA SUE VINES

"Happiness rewards the woman who does her best."



SAMUEL PATRICK WALKER

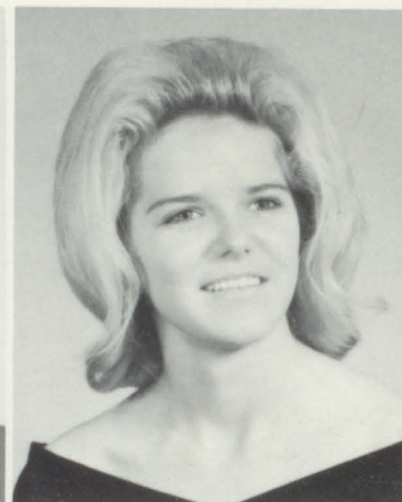
"A personality that makes friends and a loyalty that keeps them."

BOBBY JOE WALLACE

"Not by years, but by disposition is wisdom acquired."

MARY SUE WEAVER

"A cheerful woman is a queen."



MICHAEL DOYLE WEAVER

"Good-natured and good sense must ever join."

LARRY DREXEL WELLS

"I'm not lazy; I just haven't found a suitable occupation."



CHARLES GAFFORD WEST

"An accomplished athlete, with the power to achieve and the power to win."



SHEPHERD WEST

"A good name is rather to be chosen than all the riches in the world."



BENJAMIN MARLEY WILLIAMS

"A brilliant mind behind a quiet smile."

HELEN LOUISE WILSON

"Silence accomplishes much that noise cannot."



VERA LORRAINE WILSON

"Charm is the measure of attraction's power."

### *Senior Sponsors*



*Mrs. Sara Folmar*



*Mrs. Jean Petrey*



# Directory

ALFORD, PATRICIA CLEONE...4-H 1, 2, 3, 4; F.H.A. 1, 2, 3, 4; Tiger Rag Staff 4; Pep Squad 1, 2, 3, 4; Beauty Pageant Program 3, 4; PANORAMA Staff 4; F.T.A. 3, 4; Music 1, 2, 3; Girls' Basketball Team 4.

AUSBON, ROBERT EUGENE...4-H 1, 2, 3, 4; State Convention Delegate 1, 2; County Awards Winner 1, 2; County Council Officer 1; President 2; Junior Honor Society 1; National Honor Society 2, 3, 4; Chemistry Club 3; Physics Club 4; PANORAMA Staff 4; Tiger Rag Staff 4; Beauty Pageant Program 2, 3, 4; Student Physical Education Teacher 4; State Journalism Clinic Delegate 4.

BAGGETT, RONALD EDWIN...4-H 1, 2, 3, 4; F.F.A. 1, 2, 3, 4; Dairy Judging Team 1; Chapter Farmer Award 2.

BAGWELL, JOHN DANIEL... "L" Club 1, 2, 3, 4; Chemistry Club 3; Physics Club 4; Football 1, 2, 3, 4; Baseball 1, 2, 3, 4; Basketball 1, 3; Beauty Pageant Program 2, 3, 4; Favorite 3; Who's Who 4.

BERGER, JEANNE ANNETTE...4-H 1, 2, 3, 4; F.H.A. 1, 2, 4; Chemistry Club 3; Beauty Pageant Program 3, 4; Who's Who 4; Pep Squad 3, 4; Tiger Rag Staff 4; Class Dancer 4; Librarian 3.

BUTLER, JOHN ALLEN...4-H 1, 2, 3, 4; Football 2, 3, 4; "L" Club 2, 3, 4; Beauty Pageant Program 2, 3, 4; Chemistry Club 3; Physics Club 4; Talent Show 3; Junior Honor Society 1; Class Quartet 4; Class Guitarist 4.

BYRD, DOREEN...4-H 1, 2, 3; Junior Honor Society 1; Pep Squad 1, 2, 3, 4; Chemistry Club 3; F.H.A. 1, 2, 3, 4; Girls' Champion Softball Team 1, 2; Girls' Champion Basketball Team 2, 3; Student Physical Education Teacher 4; Beauty Pageant Program 4; National Honor Society 2, 3, 4; Honor Student 4.

CAMPBELL, KATHRYN...National Honor Society 2, 3, 4; Junior Honor Society 1; 4-H 1, 2, 3, 4; President 3, 4; Candidate for State Reporter 4; F.H.A. 1, 3, 4; President 3, 4; Chemistry Club 3; Tiger Rag Staff 3, 4; PANORAMA Staff 4; "L" Club 4; Varsity Cheerleader 4; Junior Cheerleader 2; Sweetheart 2; P.E. Aide 4; Beauty Pageant Program 3, 4; Voted Outstanding Senior 4; Favorite 4; Class Dancer 4; Who's Who 4; Pep Squad 1, 2, 3, 4; Honor Student 4; Girls' Softball Team 1; Girls' Basketball Team; Talent Show 2.

CARLILE, MARTHA ANN...4-H 1, 2; Glee Club 1, 2; F.H.A. 1; F.T.A. 4.

CARR, DOROTHY LARUE...Junior Honor Society 1; Class Officer 1; Pep Squad 1, 2, 3; National Honor Society 2, 3, 4; 4-H 1, 2, 3, 4; F.H.A. 4; Chemistry Club 3; Tiger Rag Staff 4; Beauty Pageant Program 4; Girls' Champion Softball Team 1; Girls' Champion Basketball Team 2, 3, 4; P.E. Aide 3; National Honor Society Convention Delegate 4; Alabama Journalism Association Convention Delegate 4; Talent Show 2.

COLEMAN, STEPHEN LANIER...Football 2, 3, 4; Basketball 1, 2, 3, 4; Golf 3, 4; "L" Club 1, 2, 3, 4; President 4; Junior Honor Society 1; President 1; National Honor Society 2, 3, 4; Officer 4; BIRMINGHAM NEWS Oratorical Contest County Winner 3; National Merit Test Recognition 3; Talent Show 3; Beauty Pageant Program 2, 3, 4; Who's Who 4; Tiger Rag Staff 4; PANORAMA Staff 4; Chemistry Club 3; Physics Club 4; 4-H 1; State French Club Convention, Third Place Skit 4; Honor Student 4; Class Lawyer 4; Voted Outstanding Senior 4; Class Guitarist 4; F.T.A. Musical Program 4; French Club 4.



# Directory

CURTIS, CLARICE LOUISE...Pep Squad 1, 2, 3, 4; F.H.A. 1, 2, 3, 4; Tiger Rag Staff 4; 4-H 1, 2, 3, 4; Beauty Pageant Program 3; Librarian 2.

CURTIS, DANIEL PHILIP...4-H 1, 2, 3, 4; Chemistry Club 3; Basketball 1; Pep Squad 1, 2, 3, 4.

DAVIS, WILLIAM MARTIN...F.F.A. 2, 3, 4; Officer 4; Livestock Judging Team 3, 4; Chapter Farmer Award 3; State Farmer Award 4; 4-H 1, 2, 3, 4; County Council Officer 2; State Tractor Driving Winner 2; Football 2, 4; Beauty Pageant Program 2, 3, 4; Chemistry Club 3; Physics Club 4.

DICKERSON, PAUL HENRY, JR....Band 1, 2; Pep Squad 1, 2; Football 3, 4; 4-H 1, 2, 3, 4; "L" Club 3, 4; Beauty Pageant Program 2, 3, 4; Chemistry Club 3; Physics Club 4; Basketball Scorekeeper 3, 4.

ELLIOTT, ANDREW BEALL...Football 1, 2, 3, 4; All Conference 4; All State 4; County Best Lineman 4; Basketball 1, 2, 3, 4; Most Valuable Player 4; Baseball 2, 4; Golf 3, 4; 4-H 1, 2, 3, 4; Chemistry Club 3; Physics Club 4; Who's Who 1, 2, 3, 4; Beauty Pageant Program 3, 4; Class Guitarist 4; "L" Club 1, 2, 3, 4; PANORAMA Staff 4.

GAFFORD, PATRICIA ELAINE...4-H 1, 2, 3, 4; F.H.A. 1, 2, 4; Pep Squad 1.

GOLDEN, BILL...Band 1, 2, 3, 4; 4-H 1, 2; National Honor Society 2, 3, 4; Junior Honor Society 1; Pep Squad 1, 2, 3, 4; Beauty Pageant Program 2, 3, 4; Talent Show 1, 2, 3; Winner 1, 2; Chemistry Club 3; Physics Club 4; Honor Student 4; National Honor Society Convention Delegate 4.

GOLDEN, WILLIAM DAVID...Football 1, 2; 4-H 1, 2, 3, 4; F.F.A. 1, 2, 3, 4; Land Judging Team 4.

HELMS, MARY ANN...Junior Honor Society 1; Band 1, 2; Majorette 1; Cheerleader 2, 3, 4; Head 4; "L" Club 2, 3, 4; Tiger Rag Staff 2, 3, 4; 4-H 1, 2; National Honor Society 2, 3, 4; Officer 4; Pep Squad 1, 2, 3, 4; PANORAMA Staff 4; Chemistry Club 3; Physics Club 4; Who's Who 3, 4; Beauty Pageant Program 2, 4; Beauty 3; Talent Show 1, 2; County Majorette Winner 1; District Twirling and Strutting Champion 1; Runner-up Alabama Twirling and Strutting Champion 1, 2, 3; Runner-up Miss Majorette of Alabama 1, 2, 3; Honor Student 4; Class Dancer 4; Class Twirler 4; Girls' State Representative 3; Junior Representative to Citizenship Conference 3; Voted Outstanding Senior 4.

HOLLADAY, JERRY THOMAS...Football 3, 4; F.F.A. 1, 2, 3, 4; Beauty Pageant Program 4; 4-H 1, 2, 3, 4.

HYBART, JUDY ALICE...4-H 1, 2, 3; F.H.A. 1, 2, 3; Girls' Champion Basketball Team 3, 4; Girls' Champion Softball Team 1, 2; Pep Squad 3.

JONES, LEWIS HAROLD...Football 3, 4; Beauty Pageant Program 3, 4; Chemistry Club 3; F.F.A. 1, 2, 3, 4.

KELLEY, GWENDOLYN SUE...F.H.A. 1, 2, 3, 4; Music 1, 3; Student Physical Education Teacher 4; Pep Squad 2, 3, 4; Librarian 3, 4; 4-H 1.

KELLEY, JERRY GAYLE...Junior Honor Society 1; F.F.A. 1, 2; Officer 2; Class Comedian 4; Chemistry Club 3.



# Directory

KILLOUGH, BRENDA JOAN...4-H 1, 2, 4; Officer 4; Junior Honor Society 1; National Honor Society 4; Class Pianist 4; PANORAMA Staff 4; Music 1, 2; F.H.A. 1, 2, 3, 4; Quartet 4; F.F.A. Quartet Pianist 2, 3, 4; Banquet Program 3; Magazine Sales Winner 3; F.T.A. Musical Program 4; Jr. -Sr. Banquet Program 3; Junior Girls' Quartet 3; Beauty Pageant Program 2, 3, 4; Junior Class Accompanist 3; Talent Show 2, 3, 4; Winner 3, 4; Tiger Rag Staff 3, 4; District F.H.A. Program 4; Chemistry Club 3; Physics Club 4; Librarian 1; 4-H County Dress Revue Winner 1; Creative Writing Club 2, 3, 4; Officer 4; Class Officer 1, 2, 4; Pep Squad 1, 2, 3; Class Quartet 4; Teacher's Aide 2, 3.

KING, PENELOPE LOUISE...4-H 1, 2, 3, 4; Chemistry Club 3; F.H.A. 2, 3, 4; Beauty Pageant Program 2, 3, 4; Pep Squad 1.

LITTLE, JANICE LANELL...Librarian 2; 4-H 1, 2, 3, 4; Officer 1, 4; F.H.A. 2, 3, 4; Pep Squad 1, 2, 3, 4; Beauty Pageant Program 4; Band 3; Tiger Rag Staff 4; Class Soloist 4; Talent Show 1, 4; Girls' Softball Team 1; Girls' Basketball Team 3.

MCCARTHA, JANICE ELAINE...F.H.A. 1, 2, 3, 4; Quartet 4; Junior Girls' Quartet 3; Jr. -Sr. Banquet Program 3; 4-H 3, 4; Pep Squad 1, 2, 3; Class Dancer 4; Class Quartet 4; Talent Show 3, 4; F.T.A. Musical Program 4; Sweetheart 2, 3, 4; Homecoming Attendant 2, 3; Office Assistant 3, 4; District F.H.A. Convention Program 4.

MCDUGALD, MARTHA HELEN...Librarian 1; Who's Who 1; 4-H 1, 2, 3; Pep Squad 1, 2, 3, 4; President 4; Class Officer 1, 2, 3; Tiger Rag Staff 2, 3, 4; Assistant Editor 3; Editor 4; National Honor Society 2, 3, 4; Officer 3; Girls' Champion Basketball Team 3, 4; Beauty Pageant Program 2, 3; Sweetheart 4; Chemistry Club 3; F.T.A. 3, 4; President 4; PANORAMA Staff 4; Editor 4; "L" Club 4; Favorite 3; Miss Football 4; Girls' Softball Team 2; Voted Outstanding Senior 4.

McVAY, MARY ALICE...Band 1, 2, 3, 4; 4-H 1, 2, 3, 4; F.H.A. 1, 2, 4.

MAJORS, REX ALTON...Football 2, 3, 4; F.F.A. 1, 2, 3, 4; 4-H 1, 2.

MASON, NANCY SUZETTE...Pep Squad 1, 2, 3, 4; Beauty Pageant Program 2, 3, 4; F.H.A. 1, 2, 3, 4; F.T.A. 3, 4; PANORAMA Staff 4; Tiger Rag Staff 3, 4; 4-H 1, 2, 3; Chemistry Club 3; Band 1, 2; Talent Show 2; Librarian 2, 3; Student Physical Education Teacher 4.

MEGGINSON, IDA CHARLOTTE...Librarian 1; 4-H 1, 2, 3; Pep Squad 1, 2, 3, 4; Junior Honor Society 1; National Honor Society 3, 4; PANORAMA Staff 4; Girls' Basketball Team 3, 4; Beauty Pageant Program 3; Science Fair Award 2; Cheerleader 1, 2, 3; Chemistry Club 3; Office Assistant 3, 4; F.H.A. 2.

MILLS, MARGARET JOANNE...4-H 1, 2, 3, 4; Beauty Pageant Program 2, 3, 4; PANORAMA Staff 4; Tiger Rag Staff 4; Chemistry Club 3; Talent Show 3, 4; F.H.A. 1, 2, 3, 4; Quartet 4; Junior Girls' Quartet 3; Class Quartet 4; Jr. -Sr. Banquet Program 3; F.T.A. Musical Program 4; District F.H.A. Convention Program 4; Pep Squad 1; Librarian 3, 4.



# Directory

MILLS, LUTHER DEAN, JR...4-H 1, 2, 3, 4; State Conference Delegate 1, 2, 3; County Council Officer 3; F.F.A. Dairy Judging Team 4; Chapter Farmer Award 3; State Farmer Award 4; Beauty Pageant Program 4; F.F.A. 1, 2, 3, 4; F.H.A. Beau 4; Pep Squad 4.

MITCHELL, ANNETTE...Junior Honor Society 1; 4-H 1, 2, 3, 4; Officer 4; F.H.A. 4; Band 1, 2, 3, 4; Pep Squad 1, 2; Majorette 1, 2, 3, 4; Head 4; PANORAMA Staff 4; Chemistry Club 4; Beauty Pageant Program 2, 3, 4.

MOORE, VIRGINIA...4-H 1, 2, 3, 4; F.H.A. 2, 3, 4; Junior Honor Society 1; National Honor Society 2, 3, 4; Chemistry Club 3; Physics Club 4; Beauty Pageant Program 4; Student Physical Education Teacher 4; Pep Squad 1, 2, 3; Honor Student 4.

MOSES, BRENDA FAYE...Cheerleader 2, 3; "L" Club 2, 3, 4; Pep Squad 1, 2, 3, 4; Sweetheart 3; Favorite 2; F.F.A. Sweetheart 2; Beauty Pageant Program 2; F.H.A. 4; Class Dancer 4; 4-H 1, 2; Tiger Rag Staff 4; PANORAMA Staff 4.

NICHOLS, JOHNNY WAYNE...Junior Honor Society 1; National Honor Society 2, 3, 4; Officer 4; Honor Student 4; Football 2, 3, 4; Baseball 2, 3, 4; "L" Club 2, 3, 4; Officer 4; 4-H 1, 2, 3, 4; President 3, 4; F.F.A. 1, 2, 3, 4; Officer 2, 3, 4; String Band 4; Who's Who 1, 4; Chemistry Club 3; Physics Club 4; Beauty Pageant Program 2, 3, 4; French Club 4; Officer 4; Class Speaker 4; Talent Show 4.

PERDUE, PATRICIA...Librarian 1; Cheerleader 1; 4-H 1, 2, 3; Girls' Basketball Team 2, 3, 4; Beauty Pageant Program 2, 3, 4; F.H.A. 2, 3, 4; Officer 3; Tiger Rag Staff 4; PANORAMA Staff 4; Creative Writing Club 4; Class Poet 4; Pep Squad 1, 2, 3, 4; Chemistry Club 3; Physics Club 4; Top Magazine Salesman 3; Girls' Softball Team 2; Band 1; Creative Writing Club Award 4.

REVIS, MAMIE RUTH...Junior Honor Society 1; 4-H 1, 2, 3, 4; Pep Squad 1, 2; F.H.A. 1, 2, 3; Girls' Basketball Team 3.

REYNOLDS, STELLA LENORA...F.H.A. 1, 2, 3; 4-H 1, 2; Pep Squad 3.

RICHBURG, RITA FAYE...Music 1, 2, 4; National Honor Society 2, 3, 4; Class Officer 1; Beauty Pageant Program 2, 3; Chemistry Club 3; Physics Club 4; Creative Writing Club 3, 4; F.T.A. 3, 4; F.H.A. 4; Quartet 4; Junior Girls' Quartet 3; Good Citizenship Girl 4; District Wool Contest Winner 2, 4; Second Place State Wool Contest Winner 2, 4; PANORAMA Staff 4; Jr.-Sr. Banquet Program 3; 4-H 1, 2, 3, 4; Officer 3; County Council President 4; State Frozen Foods Winner 4; Dress Revue Winner 3; Dairy Foods Winner 2, 3; Essay Winner 1; Pep Squad 3, 4; Junior Honor Society 1; Class Quartet 4; Student Physical Education Teacher 4; Honor Student 4; Salutatorian 4; District F.H.A. Convention Program 4; 4-H Best Records Winner 3; F.T.A. Musical Program 4; 4-H State Conference Delegate 1, 2, 3; 4-H National Congress Delegate 4.

RUSHING, FOYE ELAINE...Cheerleader 1, 3; Pep Squad 1, 2, 3, 4; Beauty 2; Beauty Pageant Program 3; Sweetheart 4; PANORAMA Staff 4; Who's Who 1, 2, 3, 4; "L" Club 3, 4; Class Dancer 1; 4-H 1, 2, 3; Homecoming



# Directory

Attendant 2; Tiger Rag Staff 3, 4; Jr. -Sr. Banquet Program 3; F.H.A. 3; Favorite 3; Girls' Basketball Team 3, 4; Band 1.

SANDERS, EDWARD EUGENE, JR...Junior Honor Society 1; Officer 1; National Honor Society 2, 3, 4; PANORAMA Staff 4; Tiger Rag Staff 2, 3, 4; Pep Squad 1, 2, 3, 4; Beauty Pageant Program 2, 3, 4; Band 3, 4; 4-H 1, 3, 4; Chemistry Club 3; Physics Club 4; Honor Student 4; 4-H Public Speaking Contest 3.

SCHOFIELD, BETTY JEAN...Band 1, 2, 3, 4; Pep Squad 1, 2, 3, 4; 4-H 1, 2, 4; F.H.A. 1, 2, 3.

SIPPER, CHARLES ALTON...Junior Honor Society 1; Chemistry Club 3; Physics Club 4; F.F.A. 1, 2, 3; Basketball 4; 4-H 1, 2, 3; P.E. Aide 3; F.F.A. Chapter Farmer Award 3.

SIPPER, SAMUEL VERNON...Basketball 1, 2, 3, 4; Football 3, 4; F.F.A. 1, 2, 3, 4; Dairy Judging Team 4; Beauty Pageant Program 4; Who's Who 4; 4-H 1, 2, 3.

SPORT, RICHARD BRYAN...Chemistry Club 3; 4-H 1, 2; Basketball 1, 2, 4; Baseball 1, 4.

TATE, JAMES MORRIS...Football 2, 3, 4; "L" Club 2, 3, 4; Chemistry Club 3; Physics Club 4; 4-H 1, 2, 3, 4; Beauty Pageant Program 2, 4; Baseball 4.

TOMLIN, MARTHA RACHEL...4-H 1, 2, 3, 4; F.H.A. 1, 3, 4; Pep Squad 1, 2, 3, 4; Basketball Team 4.

TOMLIN, NANCY SUE...4-H 1, 2, 3, 4; F.H.A. 1, 2, 3, 4; Pep Squad 1, 2, 3, 4; Girls' Softball Team 1; Girls' Basketball Team 3; P.E. Aide 4.

TOMLIN, ROBERT LEWIS...F.F.A. 1, 2; 4-H 1, 2; Football 2, 3, 4; Beauty Pageant Program 3; Class Giftorian 4; Chemistry Club 3; Physics Club 4.

TURNER, JERRY ROSCOE...Junior Honor Society 1; National Honor Society 2, 3, 4; Honor Student 4; Football 1, 2, 3, 4; "L" Club 2, 3, 4; 4-H 1, 2, 3, 4; Officer 4; Public Speaking Contest 3, 4; PANORAMA Staff 4; Who's Who 4; Chemistry Club 3; Physics Club 4; Beauty Pageant Program 2, 3, 4; Favorite 4; Talent Show 3, 4; F.F.A. 1, 2, 3, 4; Officer 3, 4; Chapter Farmer Award 3; State Farmer Award 4; Poultry Award 3, 4; F.F.A. Quartet 2, 3, 4; County, Area, District Winners 4; String Band 4; Creative Writing Club 2, 3, 4; Officer 4; Class Quartet 3, 4; Class Soloist 4.

TURNER, SHERRON MORROW...4-H 1, 2, 3; F.H.A. 1, 2, 3; Girls' Basketball Team 3, 4; Girls' Softball Team 1, 2; Class Officer 4; Pep Squad 1, 2.

VINES, LINDA SUE...Band 1, 2, 3, 4; L.H.S. Combo 1, 2, 3, 4; Talent Show 1, 2, 3, 4; Beauty Pageant Program 3; F.H.A. 2, 4; Pep Squad 1, 2, 3, 4; 4-H 1, 2, 3, 4; Girls' Softball Team 1, 2; Girls' Basketball Team 3.



# Directory

WALKER, SAMUEL PATRICK...Junior Honor Society 1; Band 1, 2, 3, 4; Officer 2; President 3, 4; 4-H 1; Talent Show 1, 3, 4; Pep Squad 1, 2, 3, 4; National Honor Society 2, 3, 4; Officer 3; President 4; PANORAMA Staff 4; Co-Editor 4; Who's Who 3, 4; Junior Representative to Citizenship Conference 3; Chemistry Club 3; Physics Club 4; Beauty Pageant Program 2, 3, 4; Class Prophet 4; F.F.A. 4; Quartet 3, 4; County, Area, District Winners 4; Class Quartet 4; Creative Writing Club 2, 3, 4; Officer 3; President 4; Tiger Rag Staff 2, 3, 4; French Club 4; President 4; State French Club Convention, Third Place Skit 4; Boys' State Representative 3; Boys' State Academic Excellence Award 3; Best Bandsman Award 4; Participant in "Test Your Best" 3; Honor Student 4; Valedictorian 4.

WALLACE, BOBBY JOE...F.F.A. 1, 2, 3, 4; Officer 4; Land Judging Team 4; Pig Chain Participant 3; Who's Who 4; Class Speaker 4; Honor Student 4.

WEAVER, MARY SUE...4-H 1, 2, 3, 4; Pep Squad 1, 2, 3, 4; F.H.A. 1, 2, 4; Talent Show 1.

WEAVER, MICHAEL DOYLE...4-H 1, 2, 3, 4; Chemistry Club 3; Physics Club 4; "L" Club 2, 3, 4; Baseball 4; Football 2, 3, 4; Beauty Pageant Program 3, 4.

WELLS, LARRY DREXEL...F.F.A. 1, 2, 3, 4; Livestock Judging Team 4; Pig Chain Participant 3; 4-H 1, 2, 3, 4; Chemistry Club 3.

WEST, CHARLES GAFFARD...Football 1, 2, 3, 4; Co-Captain 4; Most Valuable Player Award 4; Baseball 1, 2, 3, 4; Basketball 1, 2, 3, 4; "L" Club 1, 2, 3, 4; F.F.A. 1, 2, 4; 4-H 1, 3, 4; Beauty Pageant Program 3, 4; All Star Baseball 3, 4; All State Baseball 3; All Star Football 4; South Alabama Conference Football Team 3, 4; Who's Who 1, 3, 4; Favorite 3, 4; Chemistry Club 3; Voted Outstanding Senior 4.

WEST, SHEPHERD...4-H 4; F.T.A. 4; District Convention Delegate 4; State Convention Delegate 4; Beauty Pageant Program 4.

WILLIAMS, BENJAMIN MARLEY...Junior Honor Society 1; National Honor Society 2, 3, 4; Honor Student 4; Football 1, 2, 3, 4; Basketball 1, 2, 3, 4; Baseball 1, 2, 3, 4; Golf 3, 4; "L" Club 1, 2, 3, 4; 4-H 3; Officer 3; Who's Who 1, 3, 4; PANORAMA Staff 4; Class Officer 3, 4; Good Citizenship Boy 4; Chemistry Club 3; Physics Club 4; Beauty Pageant Program 2, 3, 4; Emcee 4; Voted Outstanding Senior 4; Class Historian 4; Favorite 4; Football Co-Captain 4; Backfield Trophy 4; Sportsmanship Trophy 4; County All-Tournament Team 4.

WILSON, HELEN LOUISE...F.H.A. 1, 2, 3, 4; 4-H 1, 2, 3; Glee Club 1, 2.

WILSON, VERA LORRAINE...Class Dancer 4; 4-H 1, 2, 3, 4; Officer 2, 4; Pep Squad 2, 3; Girls' Basketball Team 3; Librarian 4; Who's Who 3; Junior Honor Society 1; National Honor Society 3, 4; "L" Club 3, 4; Sweetheart 4; Homecoming Queen 3, 4; F.H.A. 1, 2, 4; Student Physical Education Teacher 4.



## *Class History*

As we have now completed our thirteen years of training to be Senior Agents, I think it would be of interest to look back on these years of technical study.

Seven of us received a preliminary training in a highly secretive organization known as Kindergarten. The following year was our first real beginning on the road to becoming Senior Agents. As a result of the baby boom we started off with one of the largest organizations ever. Among those beginning their first year were Patricia Alford, Kathryn Campbell, Mary Ann Helms, Charlotte Megginson, Annette Mitchell, Gwen Kelley, Brenda Killough, Penelope King, Martha McDougald, Joanne Mills, Virginia Moore, Pat Perdue, Stella Reynolds, Rita Richburg, Foye Rushing, Martha Tomlin, Nancy Tomlin, Vera Wilson, Stephen Coleman, Danny Curtis, Billy Davis, Drew Elliott, Bill Golden, Jerry Kelley, Johnny Nichols, Charles Sipper, Richard Sport, Robert Tomlin, Jerry Turner, Pat Walker, Charles West, Shepherd West, and Ben Williams.

In our second year we were joined by Judy Hybart from Dozier, Mary Weaver from Brantley, and Rex Majors, who decided he wanted to try his luck at this grade again.

In our third year, Janice McCartha came from Chapel Hill, Brenda Moses from Andalusia and Bob Ausbon from Banks.

In the fourth year of our study to be Senior Agents, we were joined by some reformed espionage spies which included Doreen Byrd, LaRue Carr, Mamie Ruth Revis, and Luther Mills from Vidette, Suzette Mason from Georgiana, Sherron Turner from Florida, and Paulie Dickerson from Dothan.

In our fifth year we were joined by Brenda Moses from Tuscaloosa and Jerry Holladay, Bobby Wallace, and Larry Wells from Ivey Creek.

In our sixth year there were no new additions to our organization and our sixth grade banquet was a huge success. We all looked to our seventh year with determination, hope, and a few butterflies.

In this year we were joined by Patricia Gafford from Chapel Hill, Linda Vines from Troy, and John Allen Butler and Edward Sanders from Rutledge. This year Charlotte Megginson was a Homecoming attendant and Bill Golden was selected as the best bandsman.

In our eighth year we were joined by Janice Little from Troy, Brenda Moses from Hayneville, and Chippy Sipper from Florida. Foye Rushing and Charlotte Megginson were elected "B" team cheerleaders.

In our ninth year Ronnie Baggett and Johnny Bagwell came from Glenwood, Janice Little from Troy, and Lewis Jones from Montgomery.

The tenth year we received three new members: Jean Berger from Birmingham, Morris Tate from Glenwood and Mike Weaver from Greenville. This year Janice McCartha and Foye Rushing were Homecoming Attendants. Foye was also selected as a beauty. Mary Ann Helms placed very high in the state competition in the Twirlers and Strutters Championship.

In our eleventh year Martha Carlile came from Brantley and Charlotte Megginson from Thomasville. David Golden came from the preceding class. Mary Ann Helms and Vera Wilson were selected beauties. Vera was also elected Homecoming Queen and Janice McCartha was one of the attendants. Mary Ann and Pat Walker were selected for Girls' State and Boys' State respectively. You can see from these honors that the organization of Senior Agents 1965 is an outstanding group.

In our final year we had no new additions to our class. Vera Wilson was again elected Homecoming Queen as well as beauty. Martha McDougald was elected Miss Football. We were county champions in baseball and basketball and had one of the best football teams in LHS history. Charles West, Drew Elliott, and Johnny Bagwell received All-State and All-Conference honors, Charles West was selected to participate in the North-South All-Star football game. The famous Luverne FFA quartet was headed by two seniors, Pat Walker and Jerry Turner. Rita Richburg climaxed her 4-H honors by a trip to Chicago this year. Pat Walker was selected as the Best Bandsman and Rita Richburg and Yours Truly were selected as Good Citizenship Girl and Boy. Our class has made history in the past, just as it will continue to make history in the future.

Class Historian, Ben Williams



## *Valedictorian*



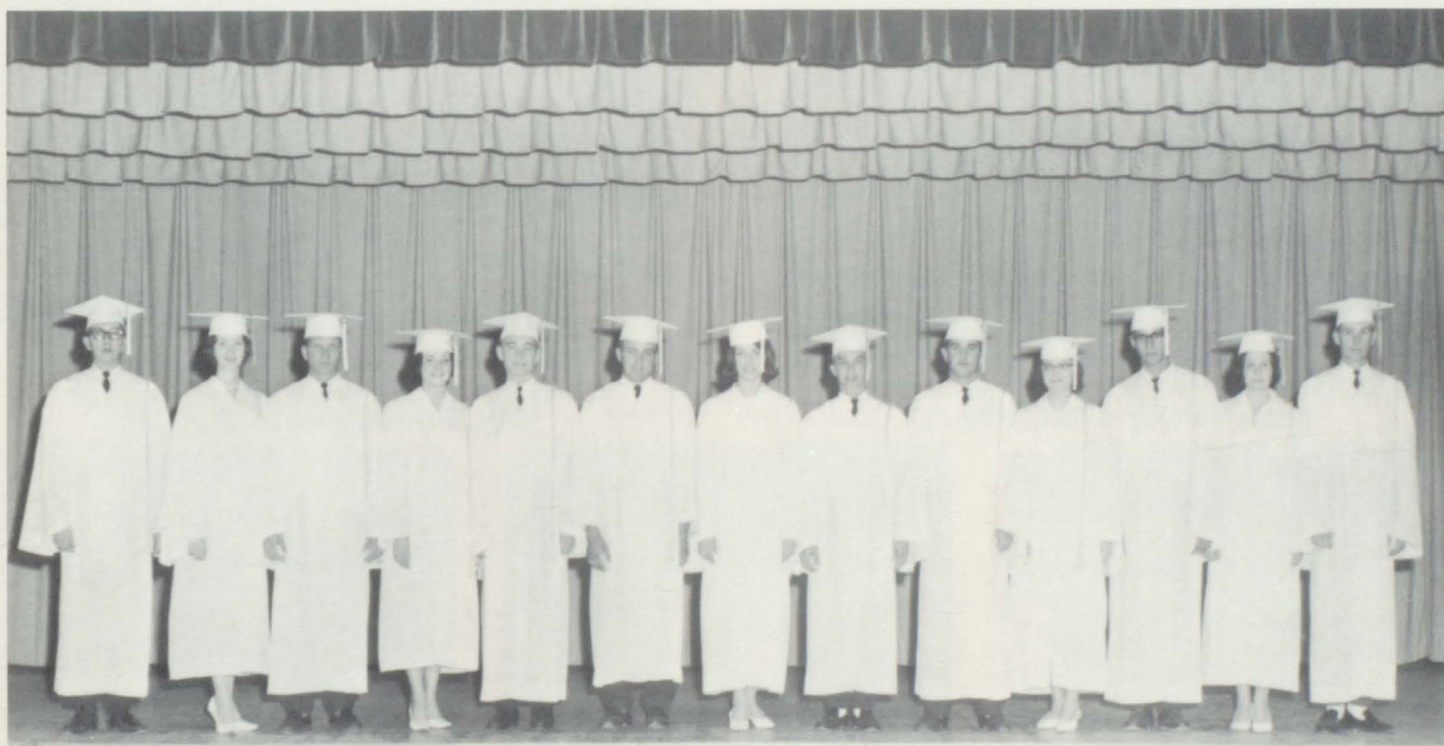
Pat Walker

## *Salutatorian*



Rita Richburg

## *Honor Students*



Pat Walker, Rita Richburg, Stephen Coleman, Mary Ann Helms, Edward Sanders, Johnny Nichols, Kathryn Campbell, Jerry Turner, Ben Williams, Virginia Moore, Bobby Wallace, Doreen Byrd, and Bill Golden.



# Commencement



CLASS PRESIDENT  
Jerry Turner



CLASS PIANIST  
Brenda Killough



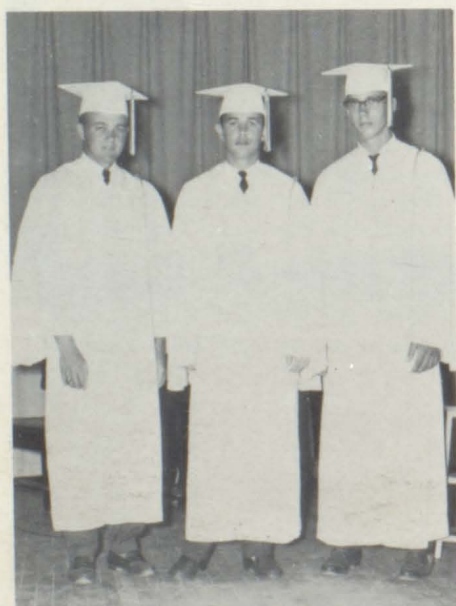
CLASS HISTORIAN  
Ben Williams



CLASS QUARTET-Rita Richburg, Joann Mills,  
Brenda Killough, Janice McCartha



CLASS GUITARISTS-Drew Elliott, John Butler,  
Stephen Coleman, Johnny Nichols



CLASS SPEAKERS-Johnny Nichols, Ben  
Williams, Bobby Wallace



CLASS TWIRLER  
Mary Ann Helms



CLASS LAWYER  
Stephen Coleman



# Exercises



CLASS GIFTORIANS  
Robert Tomlin, Jerry Holladay



CLASS POET  
Pat Perdue



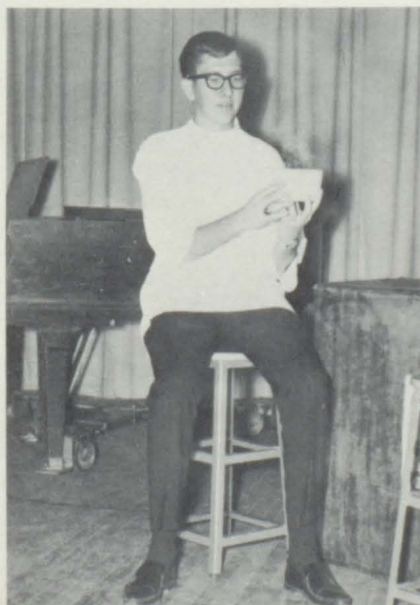
CLASS COMEDIANS  
Johnny Bagwell, Jerry Kelley



CLASS DANCERS-Vera, Janice, Brenda, Kathryn,  
Mary Ann, Sherron, Jean, Foye



CLASS QUARTET-Pat Walker, John Allen Butler,  
Drew Elliott, Jerry Turner



CLASS PROPHET  
Pat Walker



CLASS SOLOIST  
Janice Little



CLASS SOLOIST  
Jerry Turner











# Senior Snaps



They worked hard on the dances.



The four stooges.



We hope Brenda has a trig teacher like this in college.



Weren't we cute?



Everyone studies during homeroom?



We thought they were in love.

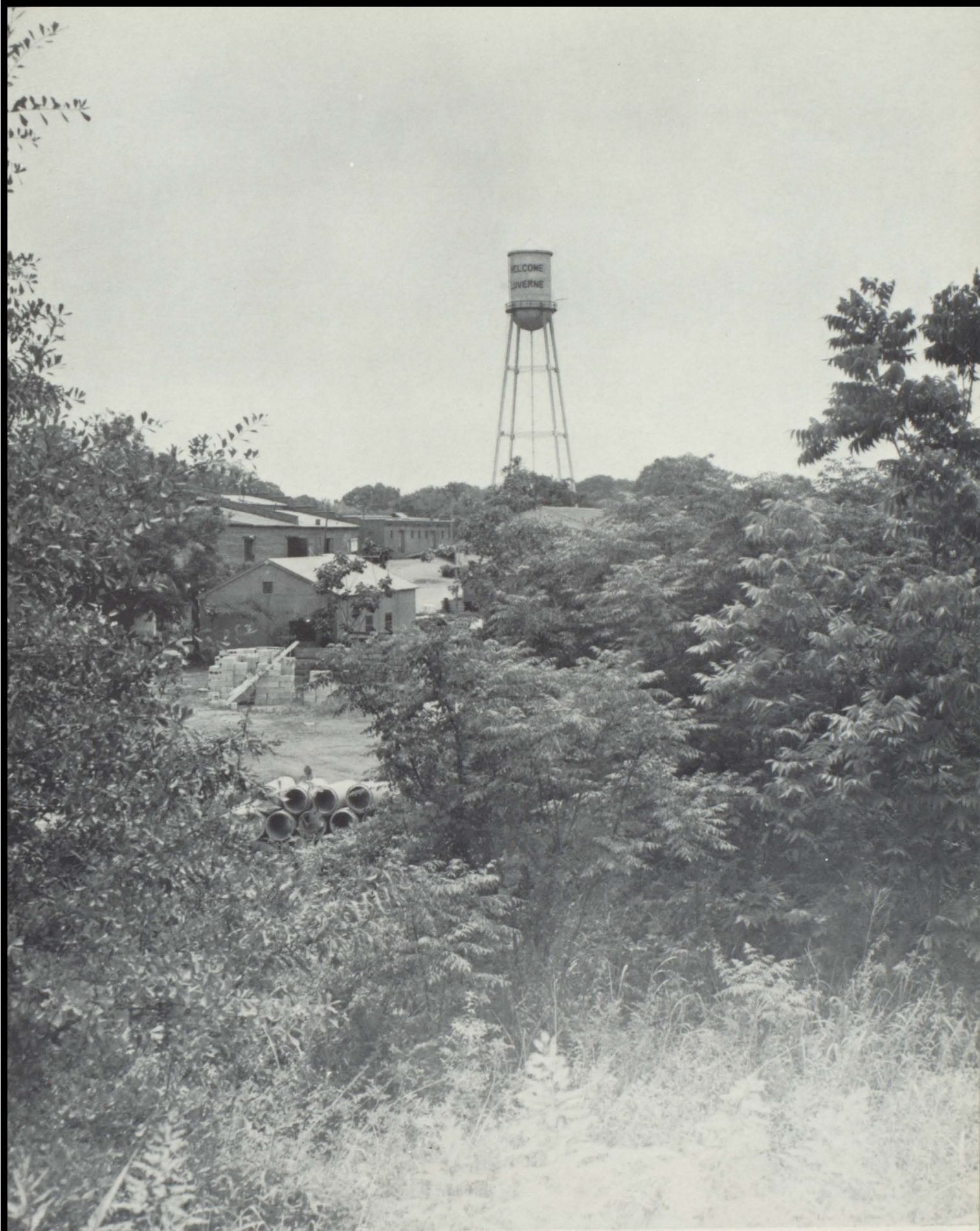


Pat liked the odds.

The Senior Class of  
Luverne High School  
announces its Commencement Exercises  
Tuesday evening, May twenty-fifth  
Nineteen hundred and sixty-five  
at eight o'clock  
High School Auditorium

Our announcement.





*Pride In Our Community*





Compliments of

*The City of Luverne*





Compliments of

*Ben Franklin Store*

Luverne,

Alabama



Compliments of

*Sheriff's Department*

Luverne,

Alabama



Compliments  
of  
*Sanders-Gin Co.*

Goshen, Alabama

Compliments of  
The Family Store  
*Western Auto  
Associate Store*

Wizard Appliances --Davis Tires--  
Western Flyer Bicycles--Vitapower  
Oil--Revelation Sporting Goods--  
Truetone Radio & Television

Home owned by David Mitchell

Compliments  
of  
*Pinkard Oil Company*



Luverne, Alabama

Compliments  
of  
*Turner's Flower Shop*

Luverne, Alabama



## *Hilton's Roller Rink*

We cater to Parties.  
Call us for information.  
Phone 2563

Troy,

Alabama

## Compliments of *Foster Drug Company*

Luverne, Alabama

Compliments of

## *J. E. Head Jeweler*

Luverne,

Alabama

Make Us Your Headquarters For All  
Sewing Needs

## *Edna Ruth's Cloth Shop*

Anything Pertaining to Sewing

Luverne,

Alabama

Phone 335-3182

Edna Ruth Norsworthy, Proprietor

## *Red & White Food Store*

"To Buy Right--Shop Red & White"

Luverne,

Alabama



SAVE 3 WAYS AT PIGGLY WIGGLY

- ☐ Everyday low, low prices!
- ☐ Weekend and first of week specials!
- ☐ S & H Green Stamps with every purchase!

Compliments of

## *Brantley Cash Store*

Brantley, Alabama

## *Thrifty Stores*

Where Shopping is Least Expensive

Troy-Andalusia-Greenville





Compliments of

*Luverne Peanut Company*

Luverne,

[ 140 ]

Alabama





*Make Every Meal  
a Sunday Dinner*



**Sunday  
Dinner**

SCHLOSS & KAHN, INC.  
MONTGOMERY 1, ALABAMA

*Alabama Drug Company*

619 W. Fairview Avenue

*&*

*Norman Bridge Drug Company*

4050 Norman Bridge Road

Kline T. Odum

Montgomery, Alabama



Compliments of

*Henderson Black & Green, Inc.*

Troy,

Alabama

Compliments of

*M. W. Norsworthy & Company*

Plumbing, Electrical and Gas Work,  
and Appliances

Day Phone: 335-5191  
Night Phone: 335-2802

Luverne,

Alabama

Compliments of

*W. F. (Bus) Watts*

Independent Insurance Agent

Luverne,

Alabama

Compliments of

*Campbell's Gulf  
Service Company*

Luverne,

Alabama

Compliments of

*Luverne Pecan  
Company*

Luverne,

Alabama

Compliments of

*Glenwood Mining  
Company, Inc.*

Dan Jackson, Jr.

Glenwood,

Alabama

Compliments of

*Ingram's Restaurant*

Troy--U.S. 231 By-Pass

Accommodations for small or large  
private parties up to 200

For Reservations call Margaret or  
Grady Ingram, Troy, Alabama

Phone 555





Compliments of

*Brantley Piggly Wiggly*

Owned by J. S. Walker

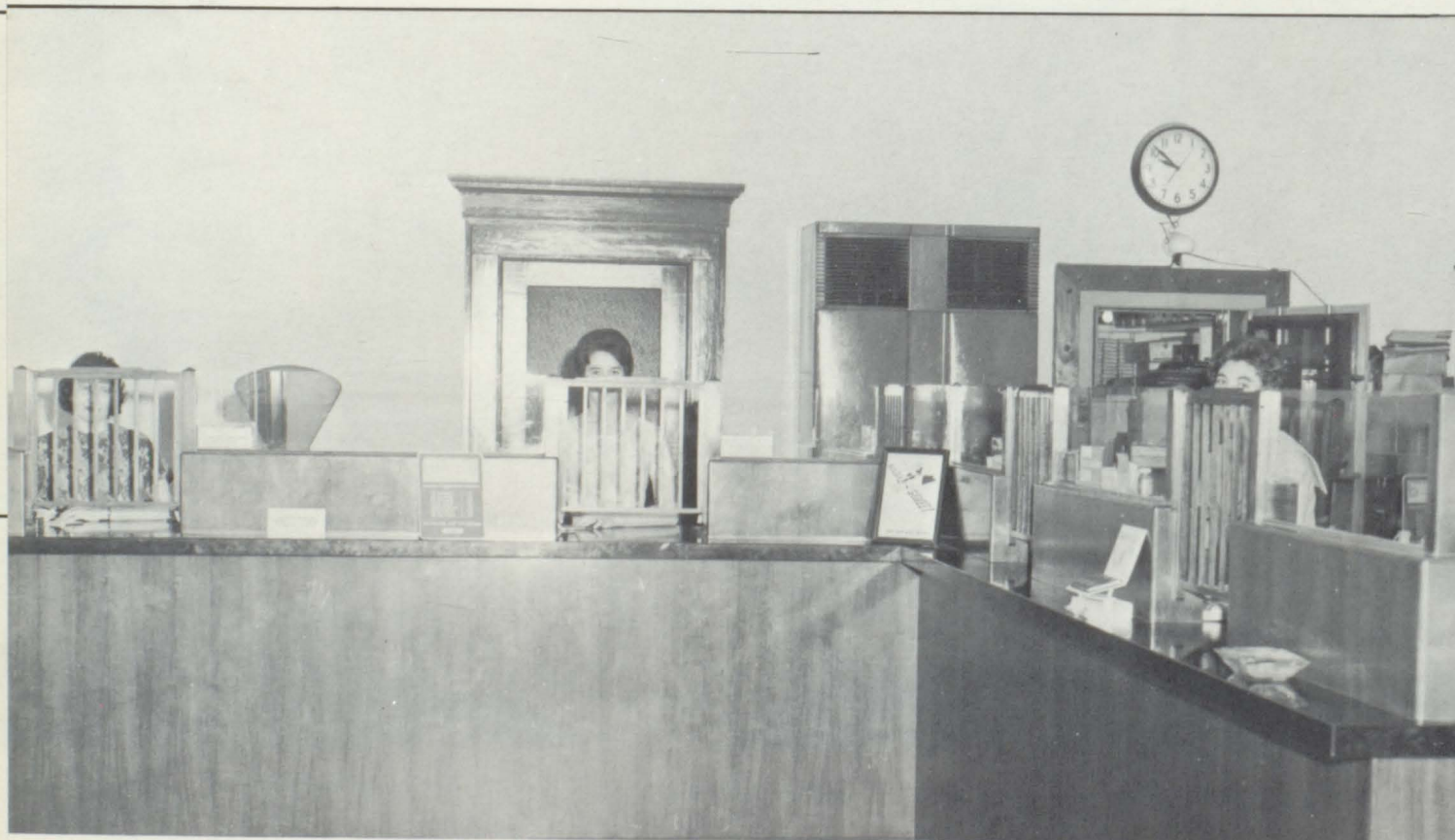
[ 143 ]

Brantley, Alabama





Compliments of  
Brantley, *D & D Lumber Company* Alabama



Compliments of  
Brantley, *Brantley Bank & Trust Company* Alabama



Compliments  
of

*The Boss  
Manufacturing  
Company*

Greenville, Alabama

Compliments  
of

*H. & H. Pest  
Control*

Greenville, Alabama

*Flynn's Farm  
Store*

Armour Fertilizer--Hardware--  
Venders for A.S.C.--Seed,  
Fertilizer and Lime--Wayne Feeds--  
Animal Medication

Rutledge, Alabama

Compliments of

*Roger's Drug  
Company*

Luverne, Alabama



Compliments of

*Anderson Tractor  
Company*

John Deere Sales and Service

Phone 546 216 E. College Street

Troy, Alabama

Compliments of

*Jayroe's Garage*

Brantley Highway

Luverne, Alabama

Compliments of

*Troy Laundry  
And  
Cleaners*

Troy, Alabama

Compliments of

*Troy Bank &  
Trust Company*

Troy, Alabama

Compliments of

*Crenshaw  
Chain Saw Company*

J. J. Bagwell

Luverne, Alabama

Compliments of

*Crenshaw  
Farmers' Co-op, Inc.*

Rutledge, Alabama

Compliments of

*Modern Gas Company*

Brantley, Alabama

Compliments of

*Beesley Packing Co., Inc.*

Home of Stellar & Debro Brand  
Meat Products

P. O. Box 887- Phones: Office  
1034 --Plant 529

Andalusia, Alabama





Compliments of

## *The Fair Store*

F. G. Mitchell, Owner

Luverne, Alabama





Compliments of

*Petrey Wholesale Company*

Petrey,

Alabama

Compliments of

*George A. Hormel  
and  
Company*

Montgomery,

Alabama





*Buy Holsum Bread*

Compliments of

*Henderson-Black Grocery*

Wholesale Grocers

Troy,

Alabama

Compliments of

*Jayroe Auto Repair*

LeGrande Avenue

Luverne,

Alabama

*Atmore Office*

*and*

*School Supply Co.*

J. M. (Mac) Mays

109 N. Main Street

Atmore,

Alabama

Compliments of

*Capps Drug Store*

607 East Commerce Street

Greenville,

Alabama

Compliments of

*City Provisions*

925 Company Street

Wetumpka,

Alabama

*Art's Music Shop*

"Everything in Music"

172 Lee Street

Montgomery, Alabama

Art Freehling

Owner

Compliments of

*Pake-Stephenson, Inc.*

Sporting Goods

Montgomery,

Alabama





Compliments of

*Barber Pure Milk Company*

Montgomery,

Alabama





Compliments of

*Calhoun's Studio*

112 West Commerce Street

Greenville, Alabama



Compliments of

*Floyd Shirley Ford*

Fords and Mercury

Your Business Appreciated

Brundidge,

Alabama





Compliments of

*Luverne Bank & Trust Company*

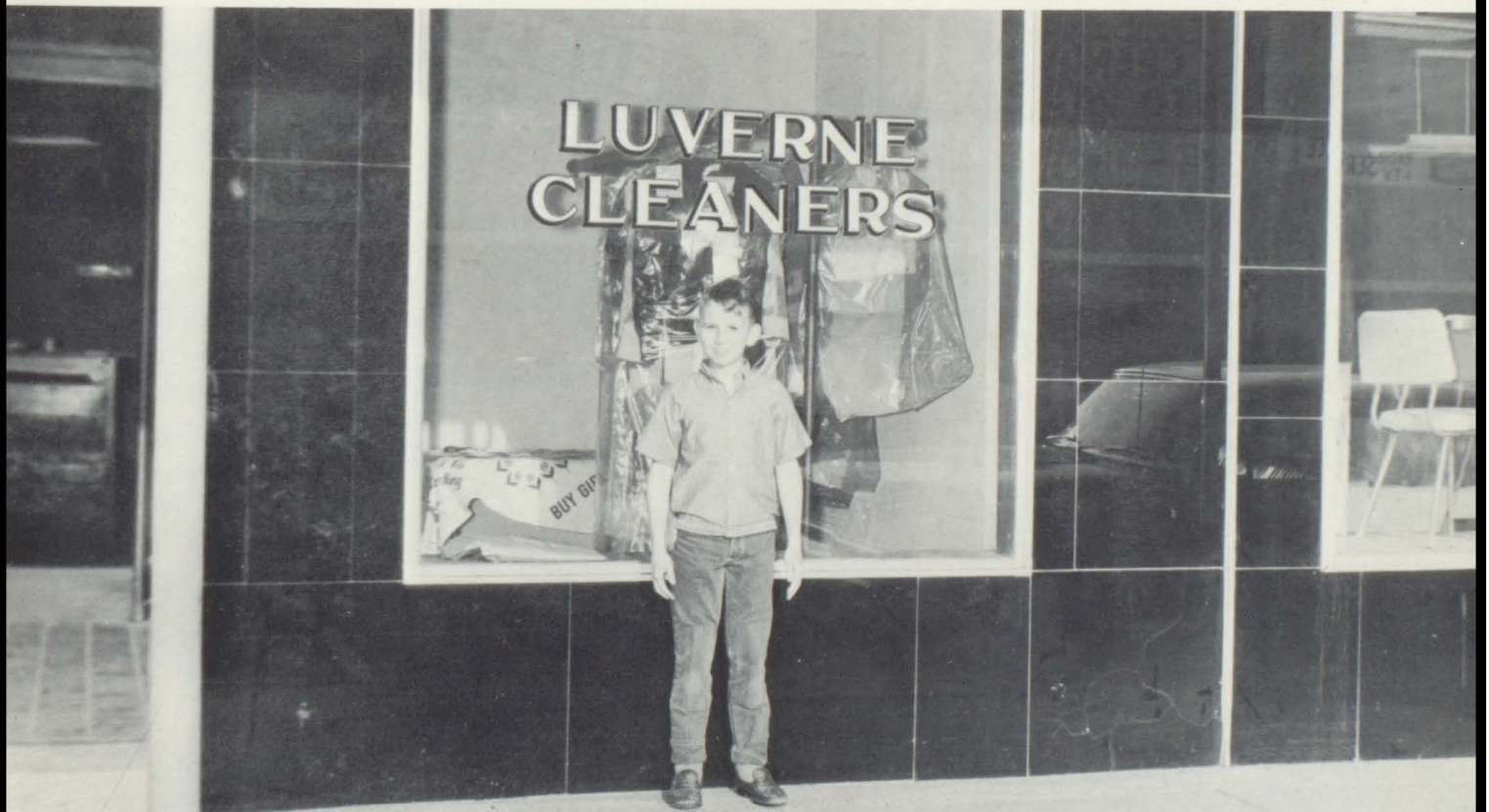
Luverne,

Alabama





Compliments of  
*Perdue-Folmar*  
 Luverne, Alabama



Compliments of  
*Luverne Cleaners*  
 Luverne, Alabama





Compliments of

*Hicks Tackle Company*

Luverne,

Alabama

Compliments of

*Florida Fish Company*

Montgomery,

Alabama





Compliments of

# *Crenshaw County Drive-In*

Luverne,

Alabama



Compliments of

# *English's Department Store*

Luverne,

Alabama





Compliments of

*Planter's Trading Company, Inc.*

Luverne,

Alabama

*J. & B. Motor Company*



Home of Fine Transportation  
Iney Thaggard and Billy Beasley

Luverne,

Alabama





Compliments of

*Luverne Motor Company*

Luverne,

Alabama



Compliments of

*Hickory Pit Barbecue*

Glenn Fuller

Luverne, Alabama

Compliments of

*Rutledge Merchantile Co.*

Gene Sanders, Owner

Rutledge Alabama



Compliments of

*Ben Bolen, Distributor*

Greenville,

Alabama



## *Compliments of*

Billy King

Rebel Oil Company

Dr. Joe E. Watson

Crenshaw County Auto Parts

H. A. Cassidy

C. L. Berry

Henderson Grocery

Rosenberg Brothers, Troy

Morgan Body Shop

B. L. Beck

R. M. Campbell

Judge John M. McSwean

Alton L. Turner

General Telephone Company of Southern Alabama

Brantley Gin Company

Roy Synce, Troy

Knight's Hair Stylist

City Drug Store, Troy

Coggins' Beauty Shop

Hicks Recapping Company

The Steak House, Greenville

The First Farmers' & Merchants' National Bank, Troy

Dairy Dream

Bassett Packing Company, Troy

Joe Moore



# *Autographs*



